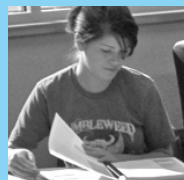
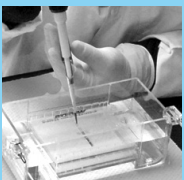
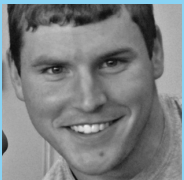
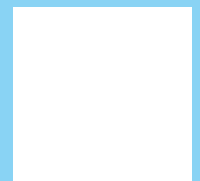
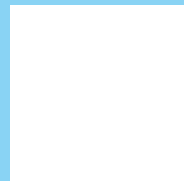
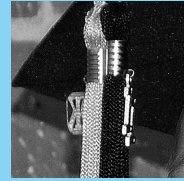


# SPRING 2012 CLASS SCHEDULE



# A Message from President Larry F. Devane



Welcome to Redlands Community College. Our students have shown time and again that they recognize the value of education and the opportunities Redlands offers them as students. Education has been found to be the constant in the analysis of a better life. Whether the study is analyzing income, quality of physical health or lifetime hobbies, the higher the educational attainment the better the quality outcomes. Here are some examples of what we have to offer to you when you enroll:

**Academics:** Redlands is committed to top notch academics. We offer 25 degree programs, many of which have multiple option areas. Our faculty to student ratio is low and 72% of our faculty holds a master's degree or better.

**Facilities:** Our three campus sites include the 320 acre Royse Ranch, our state-of-the-art Darlington Agriculture and Applied Research Center and the El Reno campus, which includes an athletic complex, aquatic center, art gallery, classrooms, labs, library, cafeteria and Cougar Crossing, an apartment style student housing complex.

**Championships:** Our students win on and off the court. Our women's golf team has won three national titles in the past six years. The Livestock Judging Team is a perennial powerhouse, winning multiple competitions, earning a #1 national ranking and producing multiple All-Americans.

**Flexibility:** Students may take live instructor-led courses, online courses & interactive TV courses. In addition, college level coursework is offered to high school students and students at state technology centers.

**Student Achievement:** Students at RCC are afforded the opportunity to represent the college and themselves at state, national, and international events and activities. The Phi Theta Kappa Honor Society won multiple awards, including the award for top chapter, at their regional conference last year.

**Technology:** The use of technology is a priority at Redlands. We incorporate it into your learning experience through the use of nursing simulation laboratories, multimedia enhanced classrooms and lecture halls, free Wi-Fi access and computer labs on the main campus and both Royse Ranch and the Darlington Center. Also, our online classes make a Redlands education available for students worldwide.

These examples are just some of the highlights of what we have to offer you as a student. Our focus is that our students have access with expectations. If, upon review of the schedule, you find yourself with questions or needing more information about how to access your interest area at RCC, please contact RCC's Student Services for follow-up details. Once again, welcome to Redlands.

**MISSION STATEMENT** - Redlands Community College provides a learner-centered environment committed to academic excellence strengthened through service and civic engagement.

**Value Statements Include:**

***Learner-Centered Environment:*** Provide a rich academic environment in which learners engage in designing and completing individual educational goals.

***Academic Excellence:*** Provide opportunities for continuous academic growth through a challenging and rigorous curriculum enhanced by the application of research and technology.

***Collaboration and Service:*** Provide learning opportunities in collaboration with public and private partners that reinforce the value of service to others and strengthen ethical development and civic engagement.



# Table of Contents

Academic Assessment Center .....	5
Academic Calendar.....	3
Bookstore Schedule.....	5
Campus Crime & Security Report .....	7
Career Services.....	5
Cooperative Agreements.....	6
Enrollment Information.....	4
FasTrack Spring Classes.....	25
FasTrack Degree Program Class Listing .....	7
Federal Financial Aid .....	5
First 8-Week Spring Classes.....	23-24
General Information.....	4-7
Honors Classes.....	6
Information Commons .....	7
Intersession Classes.....	8
Learning Resources Center (LRC) .....	6
Night Classes .....	22-23
Off-Campus Class Sites .....	26-28
ONLINE Courses.....	20-21
RCC Portal.....	3
RCConnect.....	3
Release of Student Information .....	6
Schedule of Classes .....	8-19
Second 8-Week Spring Classes .....	24-25
Student Services Center Location.....	3
Technology Center Classes .....	29
Technology Helpdesk.....	6
Tuition & Fees.....	5

## Main Campus

1300 South Country Club Road  
El Reno, OK 73036-5304

**Telephone:** 405-262-2552 or toll free: 1-866-415-6367

**Fax:** 405-422-1200 **Website:** [www.redlandsc.edu](http://www.redlandsc.edu)

For list and price of required textbooks go to: [www.redlandsc.edu/tuition-and-fees](http://www.redlandsc.edu/tuition-and-fees)

**Stay Connected**  
[www.redlandsc.edu/social-networks](http://www.redlandsc.edu/social-networks)

# Spring 2012 Academic Calendar

Intersession.....	January 4-January 13, 2012
Last day to Add/Drop Intersession Classes.....	January 4, 2012
Last Day to Withdraw from Intersession Classes.....	January 5, 2012
Holiday – Martin Luther King Day (Campus OPEN – No Classes).....	January 16, 2012
Class Work Begins – 8:00 a.m.....	January 17, 2012
Last day to Add/Drop 1st 8-Week Classes.....	January 23, 2012
Last Day to Add/Drop 16-Week Classes.....	January 30, 2012
Last Day to Withdraw from 1st 8-Week Classes.....	February 24, 2012
1st 8-Week Classes End.....	March 9, 2012
2nd 8-Week Classes Begin.....	March 12, 2012
Last Day to Add/Drop 2nd 8-Week Classes.....	March 16, 2012
Spring Break (No Classes).....	March 19-23, 2012
Spring Break (Campus Closed).....	March 22-23, 2012
Holiday – Good Friday (Campus Closed).....	April 6, 2012
Last Day to Withdraw from 2nd 8-Week & 16-Week Classes.....	April 13, 2012
Semester Ends.....	May 11, 2012
Commencement.....	May 11, 2012
Holiday – Memorial Day (Campus Closed).....	May 28, 2012

**The Student Services Center is located in the Administration Building lobby.**

Call us at 405-422-1417 or toll free at 1-866-415-6367 ext. 1417.

Website: [www.redlandsc.edu/admissions](http://www.redlandsc.edu/admissions) or E-mail: [student.services@redlandsc.edu](mailto:student.services@redlandsc.edu)

## SPRING HOURS

Monday-Friday: 8:00 am – 5:00 pm

There are extended hours during the beginning of each semester.

For more information call 405-422-1417

## RCC PORTAL

### Accessing student e-mail, online courses and RCCConnect

As a Redlands Community College (RCC) student you will be provided a username and student ID number both of which are printed at the bottom of the course schedule you received after enrolling.

- Access the Internet, open the browser of your choice and insert the following link <http://www.redlandsc.edu> locate the login boxes in the upper left area of the RCC homepage.
- Enter the username in the format: firstname.middleinitial.lastname. If you do not have a middle initial use the number 1 i.e. john.1.doe.
- Enter your student ID in the password text block; remember to enter the 9 digit number without hyphens i.e. 123456789.
- Click “Log in” and you will be directed to the portal where you will have access to your student e-mail account, online course material, RCCConnect information, etc.
- Students taking an online class, click on the “Blackboard” Icon.
- For assistance in logging into the portal please notify the Technology Helpdesk at 405-422-1288, [helpdesk@redlandsc.edu](mailto:helpdesk@redlandsc.edu) or stop by and see us personally. We are located in the Multimedia Building room MM132.

## RCCConnect

To access RCCConnect please sign in to the RCC Portal (see previous instructions) and click the RCCConnect icon on the right to access your schedule, your billing statement and refund check availability, your degree audit, and your financial aid information. For security you may be asked to re-enter your username & password.

## Enrollment Information

### First-Time Student Admission

Students are requested to report to the Student Services Center in the Administration Building and:

- Submit an application for admission or visit the RCC website at [www.redlandsc.edu](http://www.redlandsc.edu) and click “Apply Today”
- Provide high school transcript or GED test results (if applicable) plus official transcripts from any previous colleges or universities.
- Submit ACT, SAT or take Redlands Placement Test.

### Student Enrollment

- Report to Student Services Center for advisement and enrollment **OR**
- Enroll online at [www.redlandsc.edu](http://www.redlandsc.edu) to RCCConnect and click on registration **OR**
- Enroll by telephone call 405- 422-1417 or toll free 1(886) 415-6367 x 1417

### Student ID

All students must obtain a student identification card. The student ID card will be used to print in the computer labs and for making copies on the campus copy machines. The identification card must be used when cashing personal checks or picking up any funds being released at the college Business Office. Your ID may also be used for free admission to athletic events, fitness for life center and the natatorium. The student ID card is available in the RCC Physical Plant building as part of the enrollment procedure.

### Tuition & Fees

Tuition and Fees are approved by the Oklahoma State Regents for Higher Education and are subject to change without notice.

When a student enrolls, he or she is responsible for enrollment tuition and fees. These charges will not be canceled or refunded unless the student initiates a formal withdrawal before classes begin. Students who fail to pay tuition and fees or to make suitable arrangements for payment of tuition and fees, may be denied admission to classes the following semester.

<b>Oklahoma Resident</b>	Per Credit Hour	Tuition \$106.00
<b>Non-Oklahoma Resident</b>	Per Credit Hour	Tuition \$181.00
<b>International Student</b>	Per Credit Hour	Tuition \$231.00
<b>Audit a Course (without credit):</b>	Same charge as regular fees	

### Methods of Payment

- Cash, check, money order, credit card, financial aid award letter, scholarship award letter or enrollment in FACTS Tuition Payment Plan are all acceptable methods of payment or payment arrangement.
- Any items not allowed or balances not covered by award letters will be due at time of enrollment and can be paid by cash, check, credit card or enrollment in FACTS Tuition Payment Plan.
- Monthly payments can be made through the FACTS Tuition Management Program. See the Bursar’s Office for details or visit the RCC website at <http://www.redlandsc.edu> and look for the online tuition payment site. (Note: The FACTS plan requires an established checking or savings account.)

### Fee Schedule for Late Payment of Account

- Payment or approved payment arrangements at time of enrollment – no penalty.
- A minimum of \$50 per enrollment period will be charged for any late payment of the student’s account balance that does not meet the payment or payment arrangements requirements listed under “Methods of Payment.” This fee is eligible to be assessed as early as the first day of classes for each enrollment period.
- An additional monthly late payment penalty may be assessed for any unpaid account balance after the official add/drop period ends.
  - The first late payment penalty of \$3.00 per credit hour enrolled may be assessed immediately following the end of the add/drop period.
  - Additional late payment penalties may be assessed for each month an account carries any unpaid balance. Each month this charge is assessed, the penalty will be at the rate of an additional \$3.00 per credit hour enrolled and added to the previous late payment penalties assessed.
- At the time of enrollment, students who receive financial aid will be required to pay, or make payment arrangements for, any balance not covered by the financial aid.
- Students who enroll in the FACTS Tuition Payment program at the time of enrollment will not be assessed a late payment penalty as long as the FACTS account remains in good standing. Terminating the FACTS account prior to completion of the payment plan may result in late payment penalties in addition to the charges assessed by the FACTS Tuition Payment program.
- Failure to pay all charges and penalties owed by the end of the current semester will result in a hold on future enrollment and transcript. The account may be turned over to an outside collection agency and a fee may be assessed for the collection process.

### Withdrawals

Withdrawal (whether from any class or a complete withdrawal) must be completed by the enrolled student in person or in writing as described below. Telephone withdrawal will not be accepted. **Written withdrawals should be addressed to the attention of Student Services. Faxed withdrawals should be faxed to 405- 422-1239.** The following process must be adhered to – whether to “drop a class” or “withdraw from all classes:” contact the Student Services Office to obtain the proper form; then, obtain all necessary approvals (Student Services, Financial Aid, Business Office and Registrar’s Office). Until the proper form has been approved and processed by the Registrar’s Office, the student is not considered to have made a change in his or her registration. Written withdrawal must contain students name, student ID or social security number, course to withdraw from and student signature. The request should be returned by mail to the Office of Student Services, Redlands Community College, 1300 S. Country Club Road, El Reno, OK 73036, or faxed to 405-422-1239. Please be sure to provide a current contact phone number with your request. **It is the student’s responsibility to follow-up with Student Services to ensure the request was received and processed.**

## Refunds of Tuition & Fees

The refund policy for fees and tuition (except for Title IV recipients) collected from students shall be as follows:

### 1. Withdrawals and Changes of Enrollment

A. Changes in schedules and complete withdrawals from the institution during the defined add/drop period will result in full charges for courses added and full credit for courses dropped. No refunds will be made after the add/drop period for that session except as stipulated for Title IV recipients in item B.

B. The refund policy for fees and tuition collected from Title IV recipients shall be as follows: The Higher Education Act Amendments of 1992, (Title IV, Part G and 484V) require that each institution refunds unearned tuition, fees, room and board and other charges to students who withdraw from an institution before the end of the semester or term.

The Higher Education Act defines a “fair and equitable refund policy” as a policy that provides for a refund in an amount of at least the largest of the amounts provided under:

- a. The Higher Education Act defines a —fair and equitable refund policy as a policy that provides for a refund in an amount of at least the largest of the amounts provided under:
- b. The requirements of applicable state law;
- c. The Federal Government has set guidelines concerning students who receive Title IV Aid and completely withdraw from school or stop attending courses. Any student making a complete withdrawal or that stops attending his or her classes who received a Federal Pell Grant, SEOG, Subsidized Stafford Loan, Unsubsidized Stafford Loan or a Parent (PLUS) Loan, will be required to return money to the school immediately if they drop out or stop attending courses before 60% of the semester has been finished. After the calculations are figured, the Redlands Community College Financial Aid Office will notify any student who might be required to return money to the Federal Government. Your Financial Aid Satisfactory Academic Progress status will also be evaluated at the end of the semester and you will be notified accordingly.

2. Fees Applicable Only for Current Semester—Fees are applicable only for the current semester. If a student withdraws and is entitled to a refund, the amount of the refund cannot be carried forward as a credit to a subsequent session.

3. Refunds for Classes Offered on a Non-Standard Schedule—Institutions may refund tuition and fees paid by a student who must withdraw from a course offered on a schedule that differs from the standard 16-week term or 15-week trimester. Each institution may develop refund procedures for courses offered on a non-standard schedule.

4. Reminder: Students who receive federal financial aid assistance and drop one or more classes or withdraw from college may be responsible for returning to the federal government some or all of the financial aid that they have received.

**Refund of Audit Fee**—Audit fees are not refunded.

## General Information

### Academic Assessment & Assistance Center

The Academic Assessment and Assistance Center is located on the second floor of the A.R. Harrison Learning Resources Center, LRC 21-A.

Services include providing a tutorial facility, which is staffed and equipped to assist students with specific learning goals.

Skill building, subject review and/or enrichment and computer assisted instruction are available to students on an elective basis or by instructor referral. Testing services include administering Advanced Standing exams, as well as the ACT, CLEP, DANTES and other standardized tests, to students.

Hours are Monday-Friday from 8:00 am - 4:30 pm; Monday evening 5:30 pm - 8:00 pm. For more information call 405-422-6274 or e-mail [testing.center@redlandsc.edu](mailto:testing.center@redlandsc.edu).

### Bookstore Schedule

The Bookstore, managed by Follett Higher Education Group, carries required textbooks and accompanying supplies. In addition, the Bookstore offers RCC clothing and gifts, class rings and many other items.

The Bookstore is located in the Ray Porter Academic Complex and is open Monday - Friday, 8:00 a.m.-5:00 p.m. Summer hours are Monday-Thursday, 8:00 a.m.-5:00 p.m. and Friday, 8:00 a.m.-2:00 p.m. The Bookstore also has extended back-to-school rush hours. Please check with the Bookstore for these hours.

Refunds are given during the first two weeks of class during regular semesters. A receipt is required. The book must be in the condition in which it was purchased. The Bookstore buys back books every day. Check prices and order textbooks on-line 24 hours a day at [www.redlandsc.edu/bookstore](http://www.redlandsc.edu/bookstore). Major credit cards are accepted. Financial aid can be used on Follett web site.

The bookstore can be accessed online at [www.redlandsc.edu](http://www.redlandsc.edu).

### Federal Financial Aid

To apply for Federal Student Aid, applicants must complete the Free Application for Federal Student Aid (FAFSA). This is a free process that must be completed each academic year. Students may apply online at [www.redlandsc.edu/FAFSA](http://www.redlandsc.edu/FAFSA) or by mailing a completed paper application to the U.S. Department of Education.

The FAFSA application should be completed before April 1 each year in order to ensure receiving a timely Financial Aid response. Students who plan to rely on financial aid to meet tuition and/or housing payment deadlines and/or who plan to seek bookstore charge privileges must have all required documentation submitted to the Financial Aid office by July 15 for Fall, December 1 for Spring and May 1 for Summer. Students applying for financial aid after these priority deadlines will need to make alternative arrangements for tuition, housing and bookstore charges until financial aid can be processed.

For more information, contact the Financial Aid Office at Redlands Community College at 405- 422-6250, or visit our office on campus. Redlands’ Title IV School Code is #003156.

### Career Services

- Career Services provides resources, assistance and instruction in college career planning, job market information, resume preparation, interview techniques, internship opportunities and business leadership opportunities. Contact the Career Services Office Student Center (SC-4D) at 405-422-1406 for information or e-mail: [career.services@redlandsc.edu](mailto:career.services@redlandsc.edu)
- Career Courses being offered for college credit: Career Planning (PSY 1103), Job Acquisition Skills (MGMT 2221), and Occupational/

Technical Internships (MGMT 2103). See Career Services for more information.

- Students to view jobs or post your resume go to <http://www.redlandsc.edu/careerservices>.

### Cooperative Agreements

Redlands Community College and several area technology centers have entered into an agreement which provides students the opportunity to earn college credit for selected courses while enrolled at the area technology center. For more information contact the technology center at the specified number or call the RCC Cooperative Agreements office at 405-422-1271.

**Caddo-Kiowa Technology Center** -405-643-5511

**Chisholm Trail Technology Center**- 405-729-8324

**Mid-America Technology Center**- 405-449-3391

**Canadian Valley Technology Center (Chickasha)** - 405-224-7220

**Canadian Valley Technology Center (El Reno)** - 405-262-2629

**Canadian Valley Technology Center (Yukon)** - 405-345-3333

**Eastern Oklahoma Technology Center**- 405-390-9591

**Western Technology Center**- 580-562-3131

### Honors Classes

The RCC Honors program offers academically talented students stimulating class experiences and interaction with other exceptional students. This program promotes academic excellence challenging students to achieve their full potential. Students may enter the RCC Honors program by meeting one of these criteria: high school GPA of 3.5 on a 4.0 scale; ACT score of 22; or enter as a probationary honors student and when 9 hours of honors credit is completed with no grade below a "B," the student may be admitted to the program.

For more information, contact Jim Mauldin, C-111, Honors Director 405-422-6217, or e-mail [honors@redlandsc.edu](mailto:honors@redlandsc.edu). Information is also available in Student Services.

### Learning Resources Center (LRC)

**Hours:** Monday-Thursday 8:00 am-8:00 pm; Friday 8:00 am-5:00 pm; Saturday 10:00 am-2:00 pm  
(Changes in hours will be posted in advance.)

The A.R. Harrison Learning Resources Center (LRC) is an integral part of the educational program of RCC and is located at the north end of the Multimedia Lifelong Learning Center. The LRC is open daily for group and individual study, research and leisure reading. It provides appropriate resources required for class assignments, personal enrichment and information needs, including books, periodicals, audiovisual materials and electronic databases. Access to books in the LRC is provided through the online catalog (<http://rcclrc.redlandsc.edu>); books not held locally are available through interlibrary loan and the OK-Share program. Reserve materials, Internet access and printer/copier are also available for student and community use in the LRC. For further information or help logging in, contact the LRC at 405-422-1254 or e-mail [library@redlandsc.edu](mailto:library@redlandsc.edu).

**Electronic Services Offered:** In the LRC students can read e-mail, search the Internet and access online courses. Students can also search online full-text articles from literally thousands of magazines, newspapers and scholarly journals. Most of these resources are not available over the Internet, or require a fee to access them, but students can access them in the LRC at no charge. These electronic articles can be read online, printed in the LRC or forwarded to an e-mail address.

The LRC maintains a web page at <http://library.redlandsc.edu>. Through this website students can not only access the LRC catalog off campus, but also search a statewide and even a worldwide catalog of books to identify items to be obtained through interlibrary loan. Other research tools include links to online style guides, scholarly web sites and free e-texts of classic literature.

### Information Commons

Hours: Monday – Thursday 8:00 a.m. to 10:00 p.m.; Friday 8:00 a.m. to 5:00 p.m. (Hours may vary).

The Information Commons houses PC-based computers for student use. Students may conduct research, work on projects and papers or access the Internet. Students using computers on any Redlands campus must comply with the Network Acceptable Use Policy and Procedures found in the catalog or student handbook.

### Technology Helpdesk

Please contact the RCC Technology Helpdesk at [helpdesk@redlandsc.edu](mailto:helpdesk@redlandsc.edu) or 405-422-1288 for help with access issues in regards to:

IETV

Blackboard

RConnect

Student e-mail

E2Campus

The Helpdesk hours are: Monday – Thursday 7:45 a.m. to 10:15 p.m.; Friday 7:45 a.m. to 5:00 p.m. (Hours may vary).

### Release of Student Information & Access to Student Records

The Family Educational Rights and Privacy Act (FERPA), a Federal law, requires that Redlands Community College, with certain exceptions, obtain your written consent prior to the disclosure of personally identifiable information from your education records. However, Redlands Community College (Redlands) may disclose appropriately designated "directory information" without written consent, unless you have advised Redlands to the contrary in accordance with Redlands' procedures. The primary purpose of directory information is to allow Redlands Community College to include this type of information from your educational records in certain school publications. Examples include:

- A playbill, showing your role in a drama production;
- The annual yearbook or student directory;
- Honor roll or other recognition lists;
- Graduation programs; and
- Sports activity sheets, such as for basketball, showing weight and height of team members.

Directory information, which is information that is generally not considered harmful or an invasion of privacy if released, can also be disclosed

to outside organizations without written consent. Outside organizations include, but are not limited to, companies that manufacture class rings or publish yearbooks. Outside organizations may also include other colleges who request information on students who have graduated for transfer purposes or students who want to pursue opportunities after Redlands. In addition, two federal laws require Redlands, who receives Federal assistance, to provide military recruiters, upon request, with three directory information categories—names, addresses and telephone listings—unless students have advised Redlands that they do not want their information disclosed without their prior written consent.

If you do not want Redlands Community College to disclose directory information from your educational records without your prior written consent, you must notify Redlands in writing by the date you wish to end directory information disclosure. A block on disclosure of directory information is NOT retroactive, but it will remain in effect from the date of initiation to the date of cancellation (if any). To request a block on your directory information, please contact the Registrar’s Office by email at [records@redlandsc.edu](mailto:records@redlandsc.edu) from your Redlands student email account or by phone at 405- 422-6238; you may also contact the Registrar’s Office to have a directory information block removed. Redlands can release your directory or confidential information to someone of your choosing, but you must contact the Registrar’s Office to request such service. Redlands Community College has designated the following information as directory information: [Note: an educational agency like Redlands may, but does not have to, include all the information listed below.]

Student’s name • Address • Telephone listing • Electronic mail address • Photograph • Date and place of birth • Major field of study  
 Dates of attendance • Grade level • Participation in officially recognized activities and sports • Weight and height of athletic team members  
 Degrees, honors, and awards received • The most recent educational agency or institution attended

NOTE – the item below does NOT apply at Redlands Community College. Redlands does not view the Social Security Number (SSN) or the student ID number as directory information. Redlands views both items as confidential information and will NOT disclose either one without specific written permission to release either the SSN or the student ID number.

- Student ID number, user ID, or other unique personal identifier used to communicate in electronic systems that cannot be used to access education records without a PIN, password, etc. (A student’s SSN, in whole or in part, cannot be used for this purpose.)
- Please note that Redlands does disclose confidential information, including the SSN, to outside organizations as required for regulatory compliance.

### Campus Crime, Security, and Fire Report

Section 485 of the Higher Education Act requires Redlands Community College to collect data about the level and nature of crimes and fires on campus. To view the most recent report visit the webpage: <http://www.redlandsc.edu/security>

### Weather Announcements

If classes are canceled due to bad weather, announcements will be made on local television stations (KFOR- Channel 4, KOCO-Channel 5, KWTW-Channel 9) and radio stations (KTOK-1000AM and KOKC-1520 AM). You may also check the RCC website at [www.redlandsc.edu](http://www.redlandsc.edu), sign up to receive an e2campus text message alert at [www.redlandsc.edu](http://www.redlandsc.edu), or call the switchboard at 405-262-2552 or toll free at 1-866-415-6367.

## FasTrack One-Year Accelerated Degree Program

### Summer

GEOL 1054 Geology w/Lab June  
 BISC 1114 Biology w/Lab July

### Summer II

ART 1123 Art Apprec II ONLINE  
 (Intersession)  
 PSY 2163 Dev Psych ONLINE  
 ENGL 2413 Intro to Lit I ONLINE

### Fall Semester

First Eight Weeks  
 ENGL 1113 Engl Comp I  
 SPCH 1113 Fund Speech  
 ENGL 2433 American Literature I

### Second Eight Weeks

ENGL 1213 Engl Comp II  
 HIST 1493 US Hist sn 1877  
 ENGL 2443 American Literature II

### Sixteen Weeks

BUS 2093 Bus Comm ONLINE  
 ART 1113 Art Apprec I ONLINE

### Spring Semester

First Eight Weeks  
 CMSC 1223 Bus Appl Sftwr  
 POLS 1113 US Government  
 PSY 1113 Elem Psych

### Second Eight Weeks

HPER 1553 Lifetime Ftns/Mgmt  
 MATH 1513 Clg Algebra  
 SOC 1113 Intro Sociology

### Sixteen Weeks

ECON 2193 Prin Macroecon ONLINE  
 HPER 1322 Personal Health ONLINE

Seq #	Dept	Num.Sec	Title	Start Date	Stop Date	Days	Start Time	End Time	Location	Instructor
-------	------	---------	-------	------------	-----------	------	------------	----------	----------	------------

### INTERSESSION

Last day to add/drop is 1/4/2012. Last day to withdraw is 1/5/2012

1904	ART	1113.01	Art Apprec I	1/4/2012	1/13/2012	ONLINE	ONLINE	ONLINE	MM132	Wynia-Wedel
5201	NURS	2103.01	Role Transition*	1/4/2012	1/13/2012	TWR	09:00am	04:00pm	OE134	Sales
1970	PSY	2163.02	Dvpmntl Psych	1/4/2012	1/13/2012	ONLINE	ONLINE	ONLINE	MM132	Gruntmeir
1971	SOC	1113.11	Intro Sociology	1/4/2012	1/13/2012	ONLINE	ONLINE	ONLINE	MM132	Evans
3608	SPCH	1113.04	Fund Speech	1/4/2012	1/13/2012	MTWRF	01:00pm	05:00pm	S109	Mueggenborg

\*Must enroll through nursing department

### SPRING 2012 SCHEDULE

#### ACCOUNTING

2004	ACCT	1073.01	College Acct	1/17/2012	5/11/2012	M W F	09:00am	09:50am	S111	Staff
1911	ACCT	2173.02	Financial Acct*	1/17/2012	5/11/2012	ONLINE	ONLINE	ONLINE	MM132	Staff
2003	ACCT	2173.01	Financial Acct	1/17/2012	5/11/2012	M W F	12:00pm	12:50pm	S111	Simpson
2006	ACCT	2183.01	Managerial Acct	1/17/2012	5/11/2012	M W F	11:00am	11:50am	S111	Staff
1969	ACCT	2183.02	Managerial Acct*	1/17/2012	5/11/2012	ONLINE	ONLINE	ONLINE	MM132	Staff
2008	ACCT	2193.01	Audit Proc/Int Ctrl**	1/17/2012	5/11/2012	ARR	ARR	ARR	C103	Staff
2007	ACCT	2223.01	Tax Acctng**	1/17/2012	5/11/2012	ARR	ARR	ARR	C103	Staff
2001	ACCT	2603.01	Interm Acct**	1/17/2012	5/11/2012	ARR	ARR	ARR	C103	Staff
2002	ACCT	2703.01	Interm Acct II**	1/17/2012	5/11/2012	ARR	ARR	ARR	C103	Staff

\*Students taking an ONLINE Course, see the box on page 3 for instructions

\*\*Contact the instructor first week of class

#### AGRICULTURE ECONOMICS

4101	AGEC	1374.01	Intro Ag Econ	1/17/2012	5/11/2012	M W F	11:00am	11:50am	AGH102	Simpson
4102	AGEC	2143.01	Prn Agri Mktg	1/17/2012	5/11/2012	M W F	10:00am	10:50am	AGH102	Offolter

#### AGRICULTURE

4173	AGRI	2001.01	Ag Service Learning*	1/17/2012	5/11/2012	ARR	ARR	ARR	AGH102	Snyder
4175	AGRI	2014.01	Methodology Appl Sci*	1/17/2012	5/11/2012	ARR	ARR	ARR	AS109	Slagell-Gossen
4171	AGRI	2103.01	Comm in Ag	1/17/2012	5/11/2012	M W F	09:00am	09:50am	DEL119	Offolter
4176	AGRI	2193.01	Agricultr Internshp*	1/17/2012	5/11/2012	ARR	ARR	ARR	AGH102	Pearson
4172	AGRI	2223.01	Expl in Ag Research	1/17/2012	5/11/2012	M W F	10:00am	10:50am	DEL119	Phillips
4174	AGRI	2303.01	Ag Leadership	1/17/2012	5/11/2012	M W F	11:00am	11:50am	H101	Pearson

\*Contact the instructor first week of class

#### AGRONOMY

4177	AGRN	1124.01	Intro Soil Sci w/Lab	1/17/2012	5/11/2012	M W F M	08:00am 01:00pm	08:50am 02:50pm	AGH102 AGH102	Winter
------	------	---------	----------------------	-----------	-----------	------------	--------------------	--------------------	------------------	--------

#### APPLIED HEALTH SCIENCE

1901	AHS	1123.01	Medical Term*	1/17/2012	5/11/2012	ONLINE	ONLINE	ONLINE	MM132	Wix
1937	AHS	2013.02	Nutrition*	1/17/2012	5/11/2012	ONLINE	ONLINE	ONLINE	MM132	Funderburg
1902	AHS	2113.01	Pharmacology*	1/17/2012	5/11/2012	ONLINE	ONLINE	ONLINE	MM132	Cash

\*Students taking an ONLINE Course, see the box on page 3 for instructions

#### ADMINISTRATIVE MANAGEMENT & TECHNOLOGY

1915	AMT	1043.04	Document Formatting*	1/17/2012	5/11/2012	ONLINE	ONLINE	ONLINE	MM132	Cary
1938	AMT	2153.04	Word Procs I*	1/17/2012	5/11/2012	ONLINE	ONLINE	ONLINE	MM132	Kitchen
1950	AMT	2163.01	Admin Office Mgmt*	1/17/2012	5/11/2012	ONLINE	ONLINE	ONLINE	MM132	Ratterman
1958	AMT	2253.01	Law Office Tech*	1/17/2012	5/11/2012	ONLINE	ONLINE	ONLINE	MM132	Warren
1959	AMT	2433.01	Legal Terminology*	1/17/2012	5/11/2012	ONLINE	ONLINE	ONLINE	MM132	Warren

\*Students taking an ONLINE Course, see the box on page 3 for instructions

Seq #	Dept	Num.Sec	Title	Start Date	Stop Date	Days	Start Time	End Time	Location	Instructor
-------	------	---------	-------	------------	-----------	------	------------	----------	----------	------------

### ANIMAL SCIENCE

4156	ANSI	1124.01	Intro Anml Sci	1/17/2012	5/11/2012	M W F W	12:00pm 01:00pm	12:50pm 02:50pm	RRCB08 RRCB08	Zweiacher
4151	ANSI	2112.01	Lvstk Eval & Sel*	1/17/2012	5/11/2012	ARR	ARR	ARR	RRCB08	Reed
4153	ANSI	2123.01	Lvstk Feeding	1/17/2012	3/9/2012	M W	03:00pm	04:50pm	RRCB08	Zweiacher
4152	ANSI	2143.01	A & P Reproduction	1/17/2012	5/11/2012	MWF	12:00pm	12:50pm	AGH102	Charmasson

\*Contact the instructor first week of class

### ART

3151	ART	1013.01	Basic Art I	1/17/2012	5/11/2012	M W F	10:00am	10:50am	AS128	Bayer
3152	ART	1023.01	Basic Art II	1/17/2012	5/11/2012	M W F	10:00am	10:50am	AS128	Bayer
3164	ART	1073.01	Color-Design	1/17/2012	5/11/2012	M W F	11:00am	11:50am	AS128	Bayer
9041	ART	1113.02	Art Apprec I	1/17/2012	3/9/2012	R	06:00pm	10:00pm	YUKON	Arnold
1926	ART	1113.03	Art Apprec I*	1/17/2012	5/11/2012	ONLINE	ONLINE	ONLINE	MM132	Wright
3154	ART	1123.01	Art Apprec II	1/17/2012	5/11/2012	M W F	08:00am	08:50am	AS205	Wright
3155	ART	1123.02	Art Apprec II (H)	1/17/2012	5/11/2012	M W F	08:00am	08:50am	AS205	Wright
1905	ART	1123.03	Art Apprec II*	1/17/2012	5/11/2012	ONLINE	ONLINE	ONLINE	MM132	Wynia-Wedel
1993	ART	1123.04	Art Apprec II*	1/17/2012	5/11/2012	ONLINE	ONLINE	ONLINE	MM132	Wynia-Wedel
3157	ART	2063.01	Intro Digital Photog	1/17/2012	5/11/2012	M W F	11:00am	11:50am	LRC01	Clements
3165	ART	2093.01	Oil Painting I	3/12/2012	5/11/2012	T R	06:00pm	08:30pm	AS128	Rose
3166	ART	2093.02	Oil Painting I	1/17/2012	5/11/2012	T R	11:00am	12:15pm	AS128	Bayer
3158	ART	2103.01	Oil Paintng II	3/12/2012	5/11/2012	T R	06:00pm	08:30pm	AS128	Rose
3167	ART	2103.02	Oil Painting II	1/17/2012	5/11/2012	T R	11:00am	12:15pm	AS128	Bayer
3159	ART	2113.01	Figure Drawing	1/17/2012	5/11/2012	M W F	09:00am	09:50am	AS128	Bayer
3153	ART	2163.01	Interm Digital Photo	1/17/2012	5/11/2012	M W F	12:00pm	12:50pm	LRC01	Clements
3156	ART	2233.02	Pottery I	1/17/2012	5/11/2012	T R	09:30am	10:45am	AS125	Bayer
3160	ART	2233.01	Pottery I	1/17/2012	3/9/2012	T R	06:00pm	08:30pm	AS125	Rose
3161	ART	2243.01	Painting	1/17/2012	5/11/2012	T R	11:00am	12:15pm	AS128	Bayer
3162	ART	2263.01	Pottery II	1/17/2012	5/11/2012	T R	09:30am	10:45am	AS125	Bayer
3163	ART	2263.02	Pottery II	1/17/2012	3/9/2012	T R	06:00pm	08:30pm	AS125	Rose

\*Students taking an ONLINE Course, see the box on page 3 for instructions

### BIOLOGY

1903	BISC	1113.01	Biological Concepts*	1/17/2012	5/11/2012	ONLINE	ONLINE	ONLINE	MM132	Staff
4202	BISC	1114.02	Biology w/ Lab	1/17/2012	5/11/2012	M W M	11:00am 12:30pm	12:15pm 02:20pm	AS208 AS111	Fogle
4203	BISC	1114.03	Biology w/ Lab	1/17/2012	5/11/2012	T R R	12:30pm 02:00pm	01:45pm 03:50pm	AS208 AS111	Klepper
4204	BISC	1114.04	Biology w/ Lab	1/17/2012	5/11/2012	T R T	12:30pm 02:00pm	01:45pm 03:50pm	AS208 AS111	Klepper
9004	BISC	1114.05	Biology w/ Lab	1/17/2012	5/11/2012	T R T	06:00pm 07:30pm	07:15pm 09:20pm	KINGF KINGF	Staff
4201	BISC	1114.06	Biology w/ Lab	1/17/2012	5/11/2012	M W M	06:00pm 07:30pm	07:15pm 09:20pm	AS208 AS111	Staff

\*Students taking an ONLINE Course, see the box on page 3 for instructions

### BOTANY

4251	BOT	1114.01	Botany w/ Lab	1/17/2012	5/11/2012	M W F	08:30am 08:00am	09:45am 09:50am	AS207 AS111	Slagell-Gossen
------	-----	---------	---------------	-----------	-----------	----------	--------------------	--------------------	----------------	----------------

### BUSINESS

1908	BUS	1053.01	Bus Math*	1/17/2012	5/11/2012	ONLINE	ONLINE	ONLINE	MM132	Warren
2101	BUS	1103.01	Intro to Bus	1/17/2012	5/11/2012	M W F	12:00pm	12:50pm	S113	Staff
1953	BUS	1103.02	Intro to Bus*	1/17/2012	5/11/2012	ONLINE	ONLINE	ONLINE	MM132	Staff
1954	BUS	1353.01	Bus Ethics*	1/17/2012	5/11/2012	ONLINE	ONLINE	ONLINE	MM132	Staff
2102	BUS	2093.01	Bus Comm	1/17/2012	5/11/2012	T R	11:00am	12:15pm	S111	Staff

Seq #	Dept	Num.Sec	Title	Start Date	Stop Date	Days	Start Time	End Time	Location	Instructor
1929	BUS	2093.05	Bus Comm*	1/17/2012	5/11/2012	ONLINE	ONLINE	ONLINE	MM132	Schroder
1955	BUS	2163.01	Business Law*	1/17/2012	5/11/2012	ONLINE	ONLINE	ONLINE	MM132	Rupp
1910	BUS	2513.01	Business Stat*	1/17/2012	5/11/2012	ONLINE	ONLINE	ONLINE	MM132	McMindes

\*Students taking an ONLINE Course, see the box on page 3 for instructions

#### CHILD DEVELOPMENT

1909	CD	2023.02	Nutr/Hlth/Sfty Chld*	1/17/2012	5/11/2012	ONLINE	ONLINE	ONLINE	MM132	Storm
1912	CD	2053.01	Chld Grwth & Dev*	1/17/2012	5/11/2012	ONLINE	ONLINE	ONLINE	MM132	Evans
1914	CD	2063.04	Bhv Guid Yng Chld*	1/17/2012	5/11/2012	ONLINE	ONLINE	ONLINE	MM132	Lively
1913	CD	2073.02	Music/Mvmt/Crt Arts*	3/12/2012	5/11/2012	ONLINE	ONLINE	ONLINE	MM132	Lively
1928	CD	2183.02	Lang/Social Skls*	1/17/2012	5/11/2012	ONLINE	ONLINE	ONLINE	MM132	Evans
9052	CD	2183.03	Lang/Social Skls	3/12/2012	5/11/2012	T	06:00pm	10:00pm	YUKON	Landolfi

\*Students taking an ONLINE Course, see the box on page 3 for instructions

#### CHEMISTRY

4273	CHEM	1215.01	Chem I w/ Lab	1/17/2012	5/11/2012	T R T	06:00pm 08:00pm	07:50pm 09:50pm	AS229 AS229	Staff
4260	CHEM	1315.01	Gen Chem I w/ Lab	1/17/2012	5/11/2012	M W F	08:00am 08:00am	09:50am 09:50am	AS229 AS229	Frazier
9053	CHEM	1315.03	Gen Chem I w/ Lab	1/17/2012	5/11/2012	T R T	06:00pm 08:00pm	07:50pm 09:50pm	YUKON YUKON	Staff
4270	CHEM	1315.04	Gen Chem I w/ Lab	1/17/2012	5/11/2012	M W M	06:00pm 08:00pm	07:50pm 09:50pm	AGH102 AS229	Frazier
4268	CHEM	1415.01	Gen Chem II w/ Lab	1/17/2012	5/11/2012	M W F M W	12:00pm 10:00am	12:50pm 11:50am	AS229 AS229	Frazier

#### CRIMINAL JUSTICE

1001	CJ	1113.01	Intro to C J	1/17/2012	5/11/2012	M W F	09:00am	09:50am	S107	Storm
1918	CJ	1113.04	Intro to C J*	1/17/2012	5/11/2012	ONLINE	ONLINE	ONLINE	MM132	Hobson
1004	CJ	2043.01	CJ Rpt Writing	1/17/2012	5/11/2012	M W F	01:00pm	01:50pm	MM209	Rupp
1965	CJ	2043.02	CJ Rpt Writing*	1/17/2012	5/11/2012	ONLINE	ONLINE	ONLINE	MM132	Rupp
1974	CJ	2053.01	Org Crime/Gangs*	1/17/2012	5/11/2012	ONLINE	ONLINE	ONLINE	MM132	Hobson
1005	CJ	2101.01	Crmnl Just Practicum**	1/17/2012	5/11/2012	ARR	ARR	ARR	S111A	Storm
1006	CJ	2102.01	Crmnl Just Practicum**	1/17/2012	5/11/2012	ARR	ARR	ARR	S111A	Storm
1007	CJ	2103.01	Crmnl Just Practicum**	1/17/2012	5/11/2012	ARR	ARR	ARR	S111A	Storm
1008	CJ	2104.01	Crmnl Just Practicum**	1/17/2012	5/11/2012	ARR	ARR	ARR	S111A	Storm
1943	CJ	2201.01	Probs: Crmnl Just*	1/17/2012	5/11/2012	ONLINE	ONLINE	ONLINE	MM132	Hobson
1945	CJ	2202.01	Probs: Crmnl Just*	1/17/2012	5/11/2012	ONLINE	ONLINE	ONLINE	MM132	Hobson
1946	CJ	2203.01	Probs: Crmnl Just*	1/17/2012	5/11/2012	ONLINE	ONLINE	ONLINE	MM132	Hobson
1952	CJ	2204.01	Probs: Crmnl Just*	1/17/2012	5/11/2012	ONLINE	ONLINE	ONLINE	MM132	Hobson
1972	CJ	2333.01	Police Org/Mgmt*	1/17/2012	5/11/2012	ONLINE	ONLINE	ONLINE	MM132	Storm
1003	CJ	2343.01	Crmnl Investigation	1/17/2012	5/11/2012	M W F	11:00am	11:50am	S107	Storm
1921	CJ	2353.01	Adm Corr Inst*	1/17/2012	5/11/2012	ONLINE	ONLINE	ONLINE	MM132	Hobson
1015	CJ	2433.01	Cmty Cul Div	1/17/2012	5/11/2012	M W F	10:00am	10:50am	S107	Storm
1966	CJ	2433.02	Cmty Cul Div*	1/17/2012	5/11/2012	ONLINE	ONLINE	ONLINE	MM132	Storm
1016	CJ	2443.01	Crml Law & Proc	1/17/2012	5/11/2012	T R	09:30am	10:45am	S107	Staff
1962	CJ	2343.02	Crmnl Investigation*	1/17/2012	5/11/2012	ONLINE	ONLINE	ONLINE	MM132	Storm
1922	CJ	2443.02	Crml Law & Proc*	1/17/2012	5/11/2012	ONLINE	ONLINE	ONLINE	MM132	Struckle
1923	CJ	2453.01	Prob/Prl/Cmnty Trmt*	1/17/2012	5/11/2012	ONLINE	ONLINE	ONLINE	MM132	Hobson

\*Students taking an ONLINE Course, see the box on page 3 for instructions

\*\*Contact the instructor first week of class

#### COMPUTER SCIENCE

2201	CMSC	1223.01	Bus Appl Sftwr	1/17/2012	3/9/2012	M W F	08:00am	09:50am	S115	Evert
------	------	---------	----------------	-----------	----------	-------	---------	---------	------	-------

Seq #	Dept	Num.Sec	Title	Start Date	Stop Date	Days	Start Time	End Time	Location	Instructor
2202	CMSC	1223.08	Bus Appl Sftwr	1/17/2012	5/11/2012	T R	11:00am	12:15pm	S115	Ratterman
2203	CMSC	1223.09	Bus Appl Sftwr	1/17/2012	5/11/2012	M W F	11:00am	11:50am	S115	Warren
2205	CMSC	1223.11	Bus Appl Sftwr	1/17/2012	5/11/2012	T R	09:30am	10:45am	S115	Ratterman
2204	CMSC	1223.12	Bus Appl Sftwr	1/17/2012	5/11/2012	M W F	12:00pm	12:50pm	S115	Warren
2206	CMSC	1223.20	Bus Appl Sftwr	1/17/2012	3/9/2012	M	06:00pm	10:00pm	S115	Dawson
1924	CMSC	1223.02	Bus Appl Sftwr*	1/17/2012	5/11/2012	ONLINE	ONLINE	ONLINE	MM132	Warren
1956	CMSC	1223.10	Bus Appl Sftwr*	1/17/2012	5/11/2012	ONLINE	ONLINE	ONLINE	MM132	Warren
1990	CMSC	1233.09	Sprdsht Appl*	1/17/2012	5/11/2012	ONLINE	ONLINE	ONLINE	MM132	Warren
1957	CMSC	1243.01	Database Appl*	1/17/2012	5/11/2012	ONLINE	ONLINE	ONLINE	MM132	Dawson

\*Students taking an ONLINE Course, see the box on page 3 for instructions

### COMMUNICATIONS

3007	COM	0123.01	Read Imprvmt	1/17/2012	5/11/2012	T R	11:00am	12:15pm	MM210	Staff
1951	COM	0133.01	Basic Col Reading*	1/17/2012	5/11/2012	ONLINE	ONLINE	ONLINE	MM132	Staff
3003	COM	0133.03	Basic Col Reading	1/17/2012	5/11/2012	T R	12:30pm	01:45pm	MM210	Staff
1713	COM	1213.01	Sign Lang I	1/17/2012	3/9/2012	M	06:00pm	10:00pm	SWOSU	Lesperance
3008	COM	1213.03	Sign Lang I	1/17/2012	3/9/2012	M	06:00pm	10:00pm	MM129	Lesperance
3005	COM	2113.01	Sign Lang II	3/12/2012	5/11/2012	M	06:00pm	10:00pm	MM129	Lesperance
1714	COM	2113.02	Sign Lang II	3/12/2012	5/11/2012	M	06:00pm	10:00pm	SWOSU	Lesperance

\*Students taking an ONLINE Course, see the box on page 3 for instructions

### EARLY CHILDHOOD MANAGEMENT

1907	ECM	2123.01	EC Finan Plng/Mgmt*	1/17/2012	5/11/2012	ONLINE	ONLINE	ONLINE	MM132	Cary
------	-----	---------	---------------------	-----------	-----------	--------	--------	--------	-------	------

\*Students taking an ONLINE Course, see the box on page 3 for instructions

### ECONOMICS

1992	ECON	1353.01	Prsnl Finance*	1/17/2012	5/11/2012	ONLINE	ONLINE	ONLINE	MM132	Staff
2401	ECON	1353.02	Prsnl Finance	1/17/2012	5/11/2012	T R	09:30am	10:45am	S111	Staff
1960	ECON	2193.01	Prin Macroecon*	1/17/2012	5/11/2012	ONLINE	ONLINE	ONLINE	MM132	Cary
2402	ECON	2193.02	Prin Macroecon	1/17/2012	3/9/2012	M W F	09:00am	10:50am	AS208	Staff
2403	ECON	2203.01	Prin Microecon	3/12/2012	5/11/2012	M W F	09:00am	10:50am	AS208	Staff
1961	ECON	2203.02	Prin Microecon*	1/17/2012	5/11/2012	ONLINE	ONLINE	ONLINE	MM132	Cary

\*Students taking an ONLINE Course, see the box on page 3 for instructions

### EMERGENCY MEDICAL TECHNICIAN

5004	EMT	1113.01	First Responder	1/17/2012	3/9/2012	M	06:00pm	10:00pm	OE134	Gonzales
5001	EMT	1118.02	EMT Basic	1/17/2012	5/11/2012	T R	09:00am	04:00pm	OE102	Speicher
5002	EMT	1118.03	EMT Basic	1/17/2012	5/11/2012	M W R	06:00pm	10:00pm	OE101	Bradshaw
5005	EMT	1129.01	EMT Advanced	1/17/2012	5/11/2012	T R	06:00pm	10:00pm	OE135	Burleigh
5003	EMT	1129.02	EMT Advanced	1/17/2012	5/11/2012	F	09:00am	04:00pm	OE101	White
5007	EMT	1319.01	Paramedic Care I	1/17/2012	5/11/2012	T R	09:00am	04:00pm	OE101	Gonzales
5006	EMT	1353.01	Oper/Rescue Aware	1/17/2012	5/11/2012	M	08:00am	05:00pm	OE102	Justice
5009	EMT	2101.01	EMT: Basic Refresher	1/17/2012	2/10/2012	M W	06:00pm	10:00pm	OE102	Gonzales
5010	EMT	2121.01	EMT: Intrm Refresher	1/17/2012	3/1/2012	M W	06:00pm	10:00pm	OE102	Gonzales
5011	EMT	2131.01	Paramedic Refresher	1/17/2012	4/1/2012	M W	06:00pm	10:00pm	OE102	Gonzales
5008	EMT	2319.01	Paramedic Care II	1/17/2012	5/11/2012	M W	09:00am	04:00pm	OE101	Gonzales

### ENGLISH

3301	ENGL	0123.01	Fund of Engl	1/17/2012	5/11/2012	T R	08:00am	09:15am	MM210	Staff
3302	ENGL	0123.02	Fund of Engl	1/17/2012	5/11/2012	M W F	09:00am	09:50am	MM210	Staff
3305	ENGL	0123.03	Fund of Engl	1/17/2012	5/11/2012	T R	05:30pm	06:45pm	MM210	Staff
3321	ENGL	0133.04	Bsc Clg Wrtnng	1/17/2012	5/11/2012	T R	06:00pm	07:15pm	MM210	Staff
3303	ENGL	0133.01	Bsc Coll Wrtnng	1/17/2012	5/11/2012	T R	09:30am	10:45am	MM210	Staff

Seq #	Dept	Num.Sec	Title	Start Date	Stop Date	Days	Start Time	End Time	Location	Instructor
3304	ENGL	0133.03	Bsc Coll Wrng	1/17/2012	5/11/2012	M W F	10:00am	10:50am	MM210	Staff
1947	ENGL	0133.02	Bsc Coll Wrng*	1/17/2012	5/11/2012	ONLINE	ONLINE	ONLINE	MM132	Staff
1925	ENGL	1101.03	Library/Resrch Skls*	1/17/2012	3/9/2012	ONLINE	ONLINE	ONLINE	MM132	Dettlaff
1933	ENGL	1101.04	Library/Resrch Skls*	3/12/2012	5/11/2012	ONLINE	ONLINE	ONLINE	MM132	Dettlaff
1716	ENGL	1113.01	Engl Comp I	1/17/2012	5/11/2012	M W F	11:00am	11:50am	CLNTON	Dettlaff
3307	ENGL	1113.02	Engl Comp I	1/17/2012	3/9/2012	T	06:00pm	10:00pm	MM209	Hawk
3308	ENGL	1113.03	Engl Comp I	1/17/2012	5/11/2012	T R	09:30am	10:45am	S113	Due
3309	ENGL	1113.04	Engl Comp I	1/17/2012	5/11/2012	M W F	10:00am	10:50am	MM214	Rupp
3310	ENGL	1113.05	Engl Comp I	1/17/2012	3/9/2012	R	06:00pm	10:00pm	AS205	Summers
3311	ENGL	1113.06	Engl Comp I	1/17/2012	5/11/2012	T R	11:00am	12:15pm	S113	Barger
1766	ENGL	1113.07	Engl Comp I	1/17/2012	5/11/2012	T R	08:00am	09:15am	PERRY	Due
3313	ENGL	1113.09	Engl Comp I	1/17/2012	5/11/2012	M W F	11:00am	11:50am	MM129	Dettlaff
1751	ENGL	1113.11	Engl Comp I	1/17/2012	5/11/2012	T R	08:00am	09:15am	LOMEGA	Due
9045	ENGL	1113.12	Engl Comp I	1/17/2012	3/8/2012	M	06:00pm	10:00pm	YUKON	Lewellen
1744	ENGL	1113.13	Engl Comp I	1/17/2012	5/11/2012	T R	08:00am	09:15am	SHATCK	Due
3333	ENGL	1113.19	Engl Comp I	1/17/2012	5/11/2012	T R	08:00am	09:15am	MM207	Due
1941	ENGL	1113.08	Engl Comp I*	1/17/2012	5/11/2012	ONLINE	ONLINE	ONLINE	MM132	Meeker
1973	ENGL	1113.10	Engl Comp I*	1/17/2012	5/11/2012	ONLINE	ONLINE	ONLINE	MM132	Rupp, Z. A.
1930	ENGL	1113.15	Engl Comp I*	1/17/2012	5/11/2012	ONLINE	ONLINE	ONLINE	MM132	Due
1949	ENGL	1113.18	Engl Comp I*	1/17/2012	5/11/2012	ONLINE	ONLINE	ONLINE	MM132	Rupp, Z. A.
3306	ENGL	1213.01	Engl Comp II (H)	1/17/2012	5/11/2012	M W F	10:00am	10:50am	S113	Stone
3317	ENGL	1213.02	Engl Comp II	1/17/2012	5/11/2012	T R	11:00am	12:15pm	S107	Snyder
9001	ENGL	1213.03	Engl Comp II	1/17/2012	5/11/2012	M W	05:30pm	06:45pm	KINGF	Fuller
3318	ENGL	1213.04	Engl Comp II	1/17/2012	5/11/2012	M W F	10:00am	10:50am	MM129	Horton
3319	ENGL	1213.05	Engl Comp II	1/17/2012	5/11/2012	M W F	09:00am	09:50am	MM209	Horton
3320	ENGL	1213.06	Engl Comp II	1/17/2012	5/11/2012	M W F	10:00am	10:50am	S113	Stone
1731	ENGL	1213.08	Engl Comp II	1/17/2012	5/11/2012	T R	08:00am	09:15am	BURLNG	Dobry
3324	ENGL	1213.09	Engl Comp II	1/17/2012	5/11/2012	T R	02:00pm	03:15pm	MM129	Shottenkirk
3322	ENGL	1213.11	Engl Comp II	3/12/2012	5/11/2012	R	06:00pm	10:00pm	AS205	Summers
3323	ENGL	1213.12	Engl Comp II	1/17/2012	5/11/2012	T R	08:00am	09:15am	MM129	Dobry
1711	ENGL	1213.13	Engl Comp II	1/17/2012	5/11/2012	T R	09:30am	10:45am	ARNETT	Dobry
3325	ENGL	1213.14	Engl Comp II	3/12/2012	5/11/2012	T	06:00pm	10:00pm	MM209	Hawk
3326	ENGL	1213.15	Engl Comp II	1/17/2012	5/11/2012	M W F	09:00am	09:50am	MM129	Stone
3327	ENGL	1213.16	Engl Comp II	1/17/2012	5/11/2012	T R	09:30am	10:45am	MM208	Dobry
3328	ENGL	1213.17	Engl Comp II	1/17/2012	5/11/2012	M W F	11:00am	11:50am	S113	Stone
1727	ENGL	1213.18	Engl Comp II	1/17/2012	5/11/2012	M W F	08:00am	08:50am	VERDEN	Horton
1749	ENGL	1213.19	Engl Comp II	1/17/2012	5/11/2012	M W F	08:00am	08:50am	SHATCK	Horton
3312	ENGL	1213.20	Engl Comp II	1/17/2012	5/11/2012	M W F	08:00am	08:50am	AS206	Horton
1728	ENGL	1213.21	Engl Comp II	1/17/2012	5/11/2012	M W F	10:00am	10:50am	LAVERN	Horton
1704	ENGL	1213.22	Engl Comp II	1/17/2012	5/11/2012	M W F	09:00am	09:50am	ANDRKO	Stone
3315	ENGL	1213.23	Engl Comp II	1/17/2012	5/11/2012	M W F	08:00am	08:50am	MM129	Rupp
1719	ENGL	1213.24	Engl Comp II	1/17/2012	5/11/2012	T R	02:00pm	03:15pm	RINGWD	Shottenkirk
3314	ENGL	1213.25	Engl Comp II	1/17/2012	5/11/2012	M W F	12:00pm	12:50pm	MM129	Rupp
1735	ENGL	1213.26	Engl Comp II	1/17/2012	5/11/2012	T R	08:00am	09:15am	MULORL	Dobry
1743	ENGL	1213.27	Engl Comp II	1/17/2012	5/11/2012	T R	02:00pm	03:15pm	SEILING	Shottenkirk
1733	ENGL	1213.28	Engl Comp II	1/17/2012	5/11/2012	M W F	09:00am	09:50am	GEARY	Stone
1768	ENGL	1213.29	Engl Comp II	1/17/2012	5/11/2012	T R	09:30am	10:45am	NWCSTL	Dobry
1715	ENGL	1213.30	Engl Comp II	1/17/2012	5/11/2012	M W F	10:00am	10:50am	CANTON	Horton
1757	ENGL	1213.32	Engl Comp II	1/17/2012	5/11/2012	M W F	09:00am	09:50am	CYRIL	Stone
1765	ENGL	1213.33	Engl Comp II	1/17/2012	5/11/2012	M W F	12:00pm	12:50pm	PERRY	Rupp
1772	ENGL	1213.35	Engl Comp II	1/17/2012	5/11/2012	M W F	10:00am	10:50am	UNION	Horton
9055	ENGL	1213.36	Engl Comp II	3/12/2012	5/11/2012	M	06:00pm	10:00pm	YUKON	Lewellen

Seq #	Dept	Num.Sec	Title	Start Date	Stop Date	Days	Start Time	End Time	Location	Instructor
1769	ENGL	1213.37	Engl Comp II	1/17/2012	5/11/2012	T R	08:00am	09:15am	SEILING	Dobry
1931	ENGL	1213.07	Engl Comp II*	1/17/2012	5/11/2012	ONLINE	ONLINE	ONLINE	MM132	Barger
1906	ENGL	1213.10	Engl Comp II*	1/17/2012	5/11/2012	ONLINE	ONLINE	ONLINE	MM132	Snyder
1804	ENGL	1213.31	Engl Comp II*	1/17/2012	5/11/2012	ONLINE	ONLINE	ONLINE	MM132	Hawk
1942	ENGL	1213.34	Engl Comp II*	1/17/2012	5/11/2012	ONLINE	ONLINE	ONLINE	MM132	Rupp
3335	ENGL	2063.01	Crtv Writing I	1/17/2012	5/11/2012	M W F	09:00am	09:50am	MM214	Rupp
3316	ENGL	2413.01	Intro Lit I	1/17/2012	5/11/2012	M W F	10:00am	10:50am	MM209	Hasley
1932	ENGL	2423.01	Intro Fiction*	1/17/2012	5/11/2012	ONLINE	ONLINE	ONLINE	MM132	Hasley
1802	ENGL	2453.01	Intro to Poetry*	1/17/2012	5/11/2012	ONLINE	ONLINE	ONLINE	MM132	Rupp

\*Students taking an ONLINE Course, see the box on page 3 for instructions

### ENOLOGY

4711	ENO	1121.01	Sensory Eval	3/30/2012	3/31/2012	FS	09:00am	05:00pm	H101	Snyder
4702	ENO	2101.02	Enology Practicum*	1/17/2012	5/11/2012	ARR	ARR	ARR	H101	Snyder
4707	ENO	2102.02	Enology Practicum*	1/17/2012	5/11/2012	ARR	ARR	ARR	H101	Snyder
4708	ENO	2103.02	Enology Practicum*	1/17/2012	5/11/2012	ARR	ARR	ARR	H101	Snyder
4709	ENO	2104.01	Enology Practicum*	1/17/2012	5/11/2012	ARR	ARR	ARR	H101	Snyder
4703	ENO	2122.01	Analysis Must & Wine	2/4/2012	2/26/2012	SN	09:00am	05:00pm	H101	Snyder
4710	ENO	2132.01	Winery Operations	3/3/2012	3/11/2012	SN	09:00am	05:00pm	H101	Snyder

\*Contact the instructor first week of class

### EQUINE SCIENCE

4120	EQSC	1213.01	Horsemanship	1/17/2012	5/11/2012	T R	11:00am	12:15pm	RRCB08	Cohenour
4119	EQSC	2122.01	Equine Judging*	1/17/2012	5/11/2012	ARR	ARR	ARR	RRCB08	Stockman
4118	EQSC	2134.01	Adv Eq Care/Tmg	1/17/2012	5/11/2012	M TWR	10:00am 01:00pm	10:50am 03:00pm	RRCB08 RPB101	Cohenour
4126	EQSC	2193.02	Equine Internshp*	1/17/2012	5/11/2012	ARR	ARR	ARR	RRCB08	Cohenour
4122	EQSC	2423.01	Equine Anat & Phys	1/17/2012	5/11/2012	T R	09:30am	10:45am	RRCB08	Cohenour

\*Contact the instructor first week of class

### GEOGRAPHY

1919	GEG	2253.01	World Reg Geography*	1/17/2012	5/11/2012	ONLINE	ONLINE	ONLINE	MM132	Medley
------	-----	---------	----------------------	-----------	-----------	--------	--------	--------	-------	--------

\*Students taking an ONLINE Course, see the box on page 3 for instructions

### GEOLOGY

1917	GEOL	1054.01	Phys Geology w/ Lab*	1/17/2012	5/11/2012	ONLINE S	ONLINE 08:00am	ONLINE 05:00pm	MM132 AS224	Staff
1977	GEOL	1054.02	Phys Geology w/ Lab*	1/17/2012	5/11/2012	ONLINE S	ONLINE 08:00am	ONLINE 05:00pm	MM132 AS224	Staff
4304	GEOL	1054.03	Phys Geology w/ Lab	1/17/2012	5/11/2012	M W F	08:30am 08:00am	09:45am 09:50am	AS224 AS224	Sweetland Sweetland

\*Students taking an ONLINE Course, see the box on page 3 for instructions

### HISTORY

1101	HIST	1483.01	US Hist to 1877	1/17/2012	5/11/2012	M W F	09:00am	09:50am	MM207	Tabor
1102	HIST	1483.02	US Hist to 1877	1/17/2012	5/11/2012	T R	08:00am	09:15am	N108	Gorden
1752	HIST	1483.05	US Hist to 1877	1/17/2012	5/11/2012	M W F	09:00am	09:50am	MULORL	Tabor
9043	HIST	1493.01	US Hist sn 1877	1/17/2012	5/11/2012	M	06:00pm	08:50pm	YUKON	Harris
1103	HIST	1493.02	US Hist sn 1877	1/17/2012	5/11/2012	M W F	11:00am	11:50am	AS206	Tabor
9080	HIST	1493.03	US Hist sn 1877	1/17/2012	5/11/2012	M W F	01:30pm	02:20pm	OKARCH	Tabor
1104	HIST	1493.04	US Hist sn 1877	1/17/2012	5/11/2012	R	06:00pm	08:50pm	AS206	Staff
1107	HIST	1493.05	US Hist sn 1877	1/17/2012	5/11/2012	T R	11:00am	12:15pm	MM208	Roberson
1109	HIST	1493.06	US Hist sn 1877	1/17/2012	5/11/2012	M W F	08:00am	08:50am	MM207	Tate
1761	HIST	1493.09	US Hist sn 1877	1/17/2012	5/11/2012	M W F	10:00am	10:50am	PERRY	Tate
9030	HIST	1493.10	US Hist sn 1877	1/17/2012	5/11/2012	M W	08:00am	09:15am	MUSTNG	Roberson
1709	HIST	1493.11	US Hist sn 1877	1/17/2012	5/11/2012	M W F	08:00am	08:50am	ANDRKO	Tate

Seq #	Dept	Num.Sec	Title	Start Date	Stop Date	Days	Start Time	End Time	Location	Instructor
9031	HIST	1493.12	US Hist sn 1877	1/17/2012	5/11/2012	T R	02:35pm	03:50pm	MUSTNG	Roberson
9003	HIST	1493.13	US Hist sn 1877	1/17/2012	5/11/2012	T	05:30pm	08:20pm	KINGF	Kopp
1722	HIST	1493.14	US Hist sn 1877	1/17/2012	5/11/2012	T R	11:00am	12:15pm	FTSPLY	Roberson
1701	HIST	1493.15	US Hist sn 1877	1/17/2012	5/11/2012	R	06:00pm	08:50pm	ANDRKO	Staff
1747	HIST	1493.16	US Hist sn 1877	1/17/2012	5/11/2012	T R	11:00am	12:15pm	SHATCK	Roberson
1108	HIST	1493.17	US Hist sn 1877	1/17/2012	5/11/2012	M W F	10:00am	10:50am	MM208	Tate
1736	HIST	1493.18	US Hist sn 1877	1/17/2012	5/11/2012	M W F	10:00am	10:50am	MULORL	Tate
1771	HIST	1493.19	US Hist sn 1877	1/17/2012	5/11/2012	M W F	10:00am	10:50am	NWCSTL	Tate
1106	HIST	1493.20	US Hist sn 1877	1/17/2012	5/11/2012	M W F	01:00pm	01:50pm	MM129	Tate
1745	HIST	1493.21	US Hist sn 1877	1/17/2012	5/11/2012	M W F	01:00pm	01:50pm	WATNGA	Tate
1739	HIST	1493.22	US Hist sn 1877	1/17/2012	5/11/2012	R	06:00pm	08:50pm	CHCKTC	Staff
1741	HIST	1493.23	US Hist sn 1877	1/17/2012	5/11/2012	M W F	08:00am	08:50am	RINGWD	Tate
1764	HIST	1493.24	US Hist sn 1877	1/17/2012	5/11/2012	M W F	01:00pm	01:50pm	NWCSTL	Tate
1762	HIST	1493.25	US Hist sn 1877	1/17/2012	5/11/2012	R	06:00pm	08:50pm	FTCOBB	Staff
1934	HIST	1493.07	US Hist sn 1877*	3/12/2012	5/11/2012	ONLINE	ONLINE	ONLINE	MM132	Tabor
1948	HIST	1493.08	US Hist sn 1877*	1/17/2012	5/11/2012	ONLINE	ONLINE	ONLINE	MM132	Winterrowd
1975	HIST	1493.28	US Hist sn 1877*	1/17/2012	5/11/2012	ONLINE	ONLINE	ONLINE	MM132	Winterrowd
1980	HIST	2133.01	West Civ sn 1500*	1/17/2012	5/11/2012	ONLINE	ONLINE	ONLINE	MM132	Tabor

\*Students taking an ONLINE Course, see the box on page 3 for instructions

### HEALTH, PHYSICAL EDUCATION & RECREATION

6003	HPER	1191.01	Sprts Prtcptn**	1/17/2012	5/11/2012	ARR	ARR	ARR	PE41	Niehues
6004	HPER	1191.02	Sprts Prtcptn**	1/17/2012	5/11/2012	ARR	ARR	ARR	BBFLD	Newgent
6005	HPER	1191.03	Sprts Prtcptn**	1/17/2012	5/11/2012	ARR	ARR	ARR	PE41	King
6006	HPER	1191.04	Sprts Prtcptn**	1/17/2012	5/11/2012	ARR	ARR	ARR	PE41	Duda
6007	HPER	1191.05	Sprts Prtcptn**	1/17/2012	5/11/2012	ARR	ARR	ARR	PE07	Grace
6008	HPER	1201.01	Supercircuit**	1/17/2012	3/9/2012	ARR	ARR	ARR	PE02	Staff
6009	HPER	1201.02	Supercircuit**	3/12/2012	5/11/2012	ARR	ARR	ARR	PE02	Staff
6010	HPER	1243.01	Intro Ath Training	1/17/2012	5/11/2012	M W F	08:00am	08:50am	S111	Zucksworth
6001	HPER	1302.01	Intro Phys Ed	1/17/2012	5/11/2012	T R	11:00am	11:50am	AS205	Staff
6002	HPER	1312.01	Foundations Rec	1/17/2012	5/11/2012	T R	12:00pm	12:50pm	AS205	Staff
1989	HPER	1322.02	Personal Health*	1/17/2012	5/11/2012	ONLINE	ONLINE	ONLINE	MM132	Staff
1981	HPER	1553.01	Lifetime Ftns/Mgmt*	1/17/2012	5/11/2012	ONLINE	ONLINE	ONLINE	MM132	Staff
6019	HPER	1553.02	Lifetime Ftns/Mgmt	3/12/2012	5/11/2012	M W F	08:00am	09:50am	S109	Staff
6011	HPER	1601.01	Ath/Pers Trng Prac I	1/17/2012	5/11/2012	M	11:00am	11:50am	HE18	Zucksworth
6014	HPER	2001.01	Fencing	1/17/2012	5/11/2012	R	12:30pm	01:20pm	PE24	Staff
6022	HPER	2001.03	Lifeguarding	3/12/2012	5/11/2012	R R	05:00pm 08:00pm	09:30pm 09:30pm	PE10 PE28	Staff
6018	HPER	2103.01	Exer Tstg Prescrip	1/17/2012	5/11/2012	T R	08:00am	09:20am	PE10	Zucksworth
1982	HPER	2302.01	Coach Athletics*	1/17/2012	5/11/2012	ONLINE	ONLINE	ONLINE	MM132	Staff
6020	HPER	2312.02	First Aid	1/17/2012	5/11/2012	T R	09:30am	10:20am	AS205	Zucksworth
1983	HPER	2512.01	Adv Thry Bsktball*	1/17/2012	5/11/2012	ONLINE	ONLINE	ONLINE	MM132	Staff
1984	HPER	2532.01	Adv Thry Baseball*	1/17/2012	5/11/2012	ONLINE	ONLINE	ONLINE	MM132	Staff
6012	HPER	2593.01	Protect - Athl Trng	1/17/2012	5/11/2012	M W F	10:00am	10:50am	HE18	Zucksworth
6017	HPER	2601.01	Athl Trng Prac II	1/17/2012	5/11/2012	T	11:00am	11:50am	MM209	Zucksworth
6013	HPER	2623.01	Persnl Trnr Certif	1/17/2012	5/11/2012	T R	12:30pm	01:45pm	PE10	Rinehart
6015	HPER	2651.01	Athl Trng Prac III	1/17/2012	5/11/2012	T	11:00am	11:50am	MM209	Zucksworth
6016	HPER	2661.01	Pers Trng Prac III**	1/17/2012	5/11/2012	ARR	ARR	ARR	PE10	Rinehart

\*Students taking an ONLINE Course, see the box on page 3 for instructions

\*\*Contact the instructor first week of class

Seq #	Dept	Num.Sec	Title	Start Date	Stop Date	Days	Start Time	End Time	Location	Instructor
<b>HUMANITIES</b>										
9005	HUM	2003.01	Sem: Northern Italy**	3/15/2012	3/24/2012	ARR	ARR	ARR	KINGF	Schenk
3109	HUM	2113.01	Gen Hum I	1/17/2012	5/11/2012	M W F	11:00am	11:50am	MM209	Hasley
1927	HUM	2113.05	Gen Hum I*	1/17/2012	5/11/2012	ONLINE	ONLINE	ONLINE	MM132	Hasley
3102	HUM	2173.01	Beliefs/Believers	3/12/2012	5/11/2012	M W F	10:00am	11:50am	N108	Gorden
9044	HUM	2173.02	Beliefs/Believers	3/12/2012	5/11/2012	R	06:00pm	10:00pm	YUKON	Arnold
1717	HUM	2223.03	Gen Hum II	1/17/2012	5/11/2012	M	06:00pm	08:50pm	FTCOBB	Wright
3101	HUM	2223.04	Gen Hum II	1/17/2012	5/11/2012	T R	12:30pm	01:45pm	MM129	Stone
1718	HUM	2223.06	Gen Hum II	1/17/2012	5/11/2012	M	06:00pm	08:50pm	ANDRKO	Wright
1746	HUM	2223.08	Gen Hum II	1/17/2012	5/11/2012	T R	12:30pm	01:45pm	WATNGA	Stone
1737	HUM	2223.09	Gen Hum II	1/17/2012	5/11/2012	M	06:00pm	08:50pm	CHCKTC	Wright
3103	HUM	2223.01	Gen Hum II	1/17/2012	5/11/2012	M	06:00pm	08:50pm	MM208	Wright
1968	HUM	2223.07	Gen Hum II*	1/17/2012	5/11/2012	ONLINE	ONLINE	ONLINE	MM132	Hasley
3105	HUM	2613.01	Ldrshp Dev (H)	1/17/2012	5/11/2012	T R	08:00am	09:15am	AS207	Slagell-Gossen
3106	HUM	2613.02	Ldrshp Dev	1/17/2012	5/11/2012	T R	08:00am	09:15am	AS207	Slagell-Gossen

\*Students taking an ONLINE Course, see the box on page 3 for instructions

\*\*Contact the instructor first week of class

### MATHEMATICS

4401	MATH	0013.01	Basic Math	1/17/2012	5/11/2012	M W F	09:00am	09:50am	S113	Staff
4403	MATH	0103.02	Gen Clg Math	1/17/2012	5/11/2012	T R	09:30am	10:45am	MM214	Staff
4404	MATH	0103.03	Gen Clg Math	1/17/2012	5/11/2012	M W	06:00pm	07:15pm	MM214	Staff
4406	MATH	0103.04	Gen Clg Math	1/17/2012	5/11/2012	M W F	10:00am	10:50am	AS207	Staff
4407	MATH	0113.02	Bsc Algebra	1/17/2012	5/11/2012	T R	11:00am	12:15pm	MM214	Staff
4408	MATH	0113.03	Bsc Algebra	1/17/2012	5/11/2012	M W	07:30pm	08:45pm	AS206	Staff
4410	MATH	0113.05	Bsc Algebra	1/17/2012	5/11/2012	M W F	09:00am	09:50am	N106	Clifton
4411	MATH	0123.01	Interm Algebra	1/17/2012	5/11/2012	M W F	12:00pm	12:50pm	N106	Clifton
4412	MATH	0123.02	Interm Algebra	1/17/2012	5/11/2012	T R	09:30am	10:45am	N106	Clifton
4413	MATH	0123.03	Interm Algebra	1/17/2012	5/11/2012	M W	06:00pm	07:15pm	AS206	Staff
4415	MATH	0123.05	Interm Algebra	1/17/2012	3/9/2012	M W F	10:00am	11:50am	N106	Clifton
4402	MATH	0153.02	Math Prep**	1/17/2012	5/11/2012	T R	09:30am	10:45am	S105	McMindes
4405	MATH	0153.01	Math Prep**	1/17/2012	3/9/2012	M W F	10:00am	11:50am	S105	McMindes
4417	MATH	1123.01	Struct Cncp Arith II	1/17/2012	5/11/2012	M W F	09:00am	09:50am	AS206	Bates
4416	MATH	1493.01	Contemp Math	1/17/2012	5/11/2012	T R	11:00am	12:15pm	N106	Clifton
1994	MATH	1493.02	Contemp Math*	1/17/2012	5/11/2012	ONLINE	ONLINE	ONLINE	MM132	Bates
1738	MATH	1513.01	Clg Algebra	1/17/2012	5/11/2012	T R	11:00am	12:15pm	NWCSTL	Staff
4424	MATH	1513.02	Clg Algebra	1/17/2012	5/11/2012	T R	09:30am	10:45am	AS206	Staff
1723	MATH	1513.03	Clg Algebra	1/17/2012	5/11/2012	M W F	08:00am	08:50am	CASHIN	Staff
4419	MATH	1513.04	Clg Algebra	1/17/2012	5/11/2012	M W F	09:00am	09:50am	MM208	Staff
9002	MATH	1513.05	Clg Algebra	1/17/2012	5/11/2012	M W	07:00pm	08:15pm	KINGF	Golbek
4421	MATH	1513.07	Clg Algebra	3/12/2012	5/11/2012	M W F	10:00am	11:50am	MM214	Bates
9072	MATH	1513.08	Clg Algebra	1/17/2012	5/11/2012	M W	01:30pm	02:45pm	PDMT	Staff
4422	MATH	1513.09	Clg Algebra**	3/12/2012	5/11/2012	M W F	10:00am	11:50am	S105	McMindes
9032	MATH	1513.10	Clg Algebra	1/17/2012	5/11/2012	M W	02:35pm	03:50pm	MUSTNG	Bates
1748	MATH	1513.11	Clg Algebra	1/17/2012	5/11/2012	M W F	12:00pm	12:50pm	LOMEGA	Bates
9046	MATH	1513.14	Clg Algebra	1/17/2012	5/11/2012	M W F	01:40pm	02:30pm	YUKON	Staff
1755	MATH	1513.15	Clg Algebra	1/17/2012	5/11/2012	M W F	12:00pm	12:50pm	VERDEN	Bates
4427	MATH	1513.16	Clg Algebra	1/17/2012	5/11/2012	M W F	12:00pm	12:50pm	AS207	Bates
4428	MATH	1513.17	Clg Algebra	1/17/2012	5/11/2012	T R	11:00am	12:15pm	MM129	Staff
1756	MATH	1513.18	Clg Algebra	1/17/2012	5/11/2012	T R	11:00am	12:15pm	CYRIL	Staff
1732	MATH	1513.19	Clg Algebra	1/17/2012	5/11/2012	M W F	09:00am	09:50am	BURLNG	Staff

Seq #	Dept	Num.Sec	Title	Start Date	Stop Date	Days	Start Time	End Time	Location	Instructor
1760	MATH	1513.22	Clg Algebra	1/17/2012	5/11/2012	T R	11:00am	12:15pm	ARNETT	Staff
4409	MATH	1513.23	Clg Algebra	1/17/2012	5/11/2012	M W	06:00pm	07:15pm	AS205	Staff
4418	MATH	1513.25	Clg Algebra	1/17/2012	5/11/2012	M W F	08:00am	08:50am	MM208	Staff
1763	MATH	1513.26	Clg Algebra	1/17/2012	5/11/2012	M W F	12:00pm	12:50pm	MULORL	Staff
9056	MATH	1513.27	Clg Algebra	1/17/2012	5/11/2012	T R	06:00pm	07:15pm	YUKON	Staff
4425	MATH	1613.01	Trigonometry	1/17/2012	5/11/2012	M W F	10:00am	10:50am	AS224	Sweetland
4414	MATH	2103.01	Business Calc**	1/17/2012	5/11/2012	T R	12:30pm	01:45pm	S105	McMindes
4423	MATH	2103.02	Business Calc	1/17/2012	5/11/2012	M W F	11:00am	11:50am	MM208	Staff
4420	MATH	2193.02	Elem Statistics	1/17/2012	5/11/2012	M W F	12:00pm	12:50pm	AS206	Staff
4429	MATH	2714.01	Calculus I	1/17/2012	5/11/2012	T R	01:00pm	02:50pm	AS224	Sweetland
4430	MATH	2754.01	Calculus III	1/17/2012	5/11/2012	T R	01:00pm	02:50pm	AS224	Sweetland

\*Students taking an ONLINE Course, see the box on page 3 for instructions

\*\*Instructor permission required

#### MANAGEMENT

2901	MGMT	2033.01	Prin Mgmt	1/17/2012	5/11/2012	M W F	12:00pm	12:50pm	S107	Staff
1935	MGMT	2033.02	Prin Mgmt*	1/17/2012	5/11/2012	ONLINE	ONLINE	ONLINE	MM132	Staff
2905	MGMT	2103.01	Occ/Tech Internshp*	1/17/2012	5/11/2012	ONLINE	ONLINE	ONLINE	MM132	Barger
1967	MGMT	2143.01	Bus Ldrshp*	1/17/2012	5/11/2012	ONLINE	ONLINE	ONLINE	MM132	Schroder
2906	MGMT	2221.01	Job Acq/Intrnshp Skl*	1/17/2012	5/11/2012	ONLINE	ONLINE	ONLINE	MM132	Barger

\*Students taking an ONLINE Course, see the box on page 3 for instructions

#### MICROBIOLOGY

4386	MICR	2134.04	Intro Microbio w/Lab	1/17/2012	5/11/2012	M W M	06:00pm 07:30pm	07:15pm 09:20pm	AS116 AS116	Fogle
4387	MICR	2134.05	Intro Microbio w/Lab	1/17/2012	5/11/2012	T R T	01:00pm 02:30pm	02:15pm 04:20pm	AS207 AS116	Fogle

#### MARKETING

2451	MRKT	2323.02	Prin Mrktng	1/17/2012	5/11/2012	T R	12:30pm	01:45pm	AS207	Baker
------	------	---------	-------------	-----------	-----------	-----	---------	---------	-------	-------

#### MUSIC

1551	MUS	1123.01	Fund Music	1/17/2012	5/11/2012	T R	12:30pm	01:45pm	CC114	Twyman
1552	MUS	2111.01	Pvt Instr: Voice*	1/17/2012	5/11/2012	ARR	ARR	ARR	CC114	Twyman
1553	MUS	2111.02	Pvt Instr: Piano*	1/17/2012	5/11/2012	ARR	ARR	ARR	CC114	Twyman

\*Contact the instructor first week of class

#### NATURAL SCIENCE

4561	NASC	2014.01	Methodology Appl Sci*	1/17/2012	5/11/2012	ARR	ARR	ARR	AS109	Slagell-Gossen
------	------	---------	-----------------------	-----------	-----------	-----	-----	-----	-------	----------------

\*Contact the instructor first week of class

#### NURSING

5219	NURS	1211.01	Adlt Hlth Clin Exp*	1/17/2012	3/9/2012	ARR	ARR	ARR	OE135	Staff
5218	NURS	1211.02	Adlt Hlth Clin Exp*	1/17/2012	3/9/2012	ARR	ARR	ARR	OE135	Staff
5217	NURS	1211.03	Adlt Hlth Clin Exp*	1/17/2012	3/9/2012	ARR	ARR	ARR	OE135	Staff
5216	NURS	1211.04	Adlt Hlth Clin Exp*	1/17/2012	3/9/2012	ARR	ARR	ARR	OE135	Staff
5215	NURS	1211.05	Adlt Hlth Clin Exp*	1/17/2012	3/9/2012	ARR	ARR	ARR	OE135	Staff
5214	NURS	1211.06	Adlt Hlth Clin Exp*	1/17/2012	3/9/2012	ARR	ARR	ARR	OE135	Staff
5213	NURS	1211.07	Adlt Hlth Clin Exp*	1/17/2012	3/9/2012	ARR	ARR	ARR	OE135	Staff
5221	NURS	1223.01	Adlt Hlth Prb w/ Lab	1/17/2012	3/9/2012	M W MTWR	08:00am 01:00pm	12:00pm 05:00pm	OE135 OE134	Henke
5222	NURS	1233.01	PCN Nursing w/ Lab	3/12/2012	5/11/2012	M W MTWR	08:00am 01:00pm	12:00am 05:00pm	OE135 OE134	Henke
5230	NURS	1241.01	PCN Clinical Exp*	3/12/2012	5/11/2012	ARR	ARR	ARR	OE135	Staff

Seq #	Dept	Num.Sec	Title	Start Date	Stop Date	Days	Start Time	End Time	Location	Instructor
5227	NURS	1241.02	PCN Clinical Exp*	3/12/2012	5/11/2012	ARR	ARR	ARR	OE135	Staff
5226	NURS	1241.03	PCN Clinical Exp*	3/12/2012	5/11/2012	ARR	ARR	ARR	OE135	Staff
5225	NURS	1241.04	PCN Clinical Exp*	3/12/2012	5/11/2012	ARR	ARR	ARR	OE135	Staff
5224	NURS	1241.05	PCN Clinical Exp*	3/12/2012	5/11/2012	ARR	ARR	ARR	OE135	Staff
5223	NURS	1241.06	PCN Clinical Exp*	3/12/2012	5/11/2012	ARR	ARR	ARR	OE135	Staff
5236	NURS	2241.01	Psych Care Clin Exp*	1/17/2012	3/9/2012	ARR	ARR	ARR	OE134	Staff
5237	NURS	2241.02	Psych Care Clin Exp*	1/17/2012	3/9/2012	ARR	ARR	ARR	OE134	Staff
5238	NURS	2241.03	Psych Care Clin Exp*	1/17/2012	3/9/2012	ARR	ARR	ARR	OE134	Staff
5211	NURS	2241.04	Psych Care Clin Exp*	1/17/2012	3/9/2012	ARR	ARR	ARR	OE134	Staff
5212	NURS	2241.05	Psych Care Clin Exp*	1/17/2012	3/9/2012	ARR	ARR	ARR	OE134	Staff

5229	NURS	2243.01	Psych Care w/ Lab	1/17/2012	3/9/2012	M W MTWR	08:00am 01:00pm	12:00pm 05:00pm	OE134 OE135	Dowdle
5204	NURS	2255.01	Ldrshp/Mgmt Nursing	3/12/2012	5/11/2012	M W MTWR	08:00am 01:00pm	12:00pm 05:00pm	OE134 OE135	Dowdle
5247	NURS	2261.01	Ldrshp/Mgmt Clin Exp*	3/12/2012	5/11/2012	ARR	ARR	ARR	OE134	Staff
5242	NURS	2261.02	Ldrshp/Mgmt Clin Exp*	3/12/2012	5/11/2012	ARR	ARR	ARR	OE134	Staff
5243	NURS	2261.03	Ldrshp/Mgmt Clin Exp*	3/12/2012	5/11/2012	ARR	ARR	ARR	OE134	Staff

\*Contact the instructor first week of class

#### ORIENTATION

1501	ORT	1111.01	Orientation*	1/17/2012	5/11/2012	ARR	ARR	ARR	S107A	French
------	-----	---------	--------------	-----------	-----------	-----	-----	-----	-------	--------

\*Instructor permission required

#### PHILOSOPHY

1566	PHIL	1113.01	Intro Phil	1/17/2012	5/11/2012	T R	09:30am	10:45am	MM209	Arnold
1936	PHIL	1113.02	Intro Phil*	1/17/2012	5/11/2012	ONLINE	ONLINE	ONLINE	MM132	Hasley

\*Students taking an ONLINE Course, see the box on page 3 for instructions

#### PHYSICAL SCIENCE

4001	PHSC	1114.01	Phys Sci w/ Lab	1/17/2012	5/11/2012	M W W	06:00pm 07:30pm	07:15pm 09:20pm	AS224 AS224	Staff
------	------	---------	-----------------	-----------	-----------	----------	--------------------	--------------------	----------------	-------

#### PHYSICS

4051	PHYS	1215.01	Physics II w/ Lab	1/17/2012	5/11/2012	M W F	01:00pm 01:00pm	03:30pm 02:50pm	AS224 AS224	Sweetland
------	------	---------	-------------------	-----------	-----------	----------	--------------------	--------------------	----------------	-----------

#### POLITICAL SCIENCE

1705	POLS	1113.01	US Government	1/17/2012	5/11/2012	T R	08:00am	09:15am	ARNETT	Rain
1207	POLS	1113.02	US Government	1/17/2012	5/11/2012	M W F	12:00pm	12:50pm	MM207	Gorden
1202	POLS	1113.03	US Government	1/17/2012	5/11/2012	M W F	09:00am	09:50am	N108	Gorden
1703	POLS	1113.04	US Government	1/17/2012	5/11/2012	T R	08:00am	09:15am	AMBPOC	Rain
1203	POLS	1113.05	US Government	1/17/2012	5/11/2012	T R	09:30am	10:45am	MM129	Rain
1204	POLS	1113.06	US Government	1/17/2012	3/9/2012	M W F	10:00am	11:50am	N108	Gorden
9071	POLS	1113.07	US Government	1/17/2012	5/11/2012	T R	01:30pm	02:45pm	PDMT	Rain
9047	POLS	1113.09	US Government	1/17/2012	5/11/2012	M W F	07:35am	08:25am	YUKON	Caster
1754	POLS	1113.10	US Government	1/17/2012	5/11/2012	T R	08:00am	09:15am	NWCSTL	Rain
1708	POLS	1113.11	US Government	1/17/2012	5/11/2012	T R	09:30am	10:45am	ANDRKO	Rain
1206	POLS	1113.12	US Government	1/17/2012	5/11/2012	T	06:00pm	08:50pm	MM208	Staff
1720	POLS	1113.14	US Government	1/17/2012	5/11/2012	M W F	12:00pm	12:50pm	GEARY	Gorden
1742	POLS	1113.17	US Government	1/17/2012	5/11/2012	M W F	11:00am	11:50am	LOKEBA	Staff
1770	POLS	1113.18	US Government	1/17/2012	5/11/2012	M W F	11:00am	11:50am	UNION	Staff
9042	POLS	1113.19	US Government	1/17/2012	5/11/2012	M W F	01:40pm	02:30 pm	YUKON	Staff
1208	POLS	1113.29	US Government	1/17/2012	5/11/2012	M W F	11:00am	11:50am	MM207	Staff
1209	POLS	1113.23	US Government	1/17/2012	5/11/2012	T R	08:00am	09:15am	MM208	Rain

Seq #	Dept	Num.Sec	Title	Start Date	Stop Date	Days	Start Time	End Time	Location	Instructor
1916	POLS	1113.08	US Government*	3/12/2012	5/11/2012	ONLINE	ONLINE	ONLINE	MM132	Storm
1801	POLS	1113.13	US Government*	1/17/2012	5/11/2012	ONLINE	ONLINE	ONLINE	MM132	Staff
1963	POLS	1113.15	US Government*	1/17/2012	5/11/2012	ONLINE	ONLINE	ONLINE	MM132	Dickinson
1976	POLS	1113.16	US Government*	1/17/2012	5/11/2012	ONLINE	ONLINE	ONLINE	MM132	Staff
1201	POLS	2143.01	Intro St & Lcl Gov	1/17/2012	5/11/2012	T R	09:30am	10:45am	S109	Gorden

\*Students taking an ONLINE Course, see the box on page 3 for instructions

### PSYCHOLOGY

1302	PSY	1113.01	Elem Psych	1/17/2012	3/9/2012	M W F	12:00pm	01:50pm	N108	Simon
1702	PSY	1113.04	Elem Psych	1/17/2012	5/11/2012	M W F	09:00am	09:50am	AMBPOC	Mauldin
1721	PSY	1113.05	Elem Psych	1/17/2012	5/11/2012	T R	12:30pm	01:45pm	ANDRKO	Corbett
1303	PSY	1113.06	Elem Psych	1/17/2012	5/11/2012	M W F	10:00am	10:50am	MM207	Mauldin
1304	PSY	1113.07	Elem Psych	1/17/2012	5/11/2012	T R	09:30am	10:45am	MM207	Corbett
1724	PSY	1113.08	Elem Psych	1/17/2012	5/11/2012	M W F	11:00am	11:50am	DOVER	Simon
1306	PSY	1113.09	Elem Psych	1/17/2012	5/11/2012	M W F	01:00pm	01:50pm	MM207	Mauldin
1707	PSY	1113.10	Elem Psych	3/12/2012	5/11/2012	W	06:00pm	10:00pm	ANDRKO	Schwarz
1712	PSY	1113.11	Elem Psych	3/12/2012	5/11/2012	W	06:00pm	10:00pm	CHCKTC	Schwarz
1308	PSY	1113.12	Elem Psych	1/17/2012	5/11/2012	M W F	09:00am	09:50am	AS205	Mauldin
1309	PSY	1113.13	Elem Psych	3/12/2012	5/11/2012	W	06:00pm	10:00pm	MM129	Schwarz
1301	PSY	1113.15	Elem Psych	1/17/2012	5/11/2012	T R	12:30pm	01:45pm	MM207	Corbett
1726	PSY	1113.16	Elem Psych	1/17/2012	5/11/2012	T R	12:30pm	01:45pm	GEARY	Corbett
1734	PSY	1113.17	Elem Psych	1/17/2012	5/11/2012	M W F	11:00am	11:50am	FTSPLY	Simon
1725	PSY	1113.18	Elem Psych	1/17/2012	5/11/2012	M W F	01:00pm	01:50pm	LAVERN	Mauldin
1307	PSY	1113.19	Elem Psych	1/17/2012	5/11/2012	M W F	11:00am	11:50am	AS205	Simon
1920	PSY	1113.02	Elem Psych*	1/17/2012	5/11/2012	ONLINE	ONLINE	ONLINE	MM132	Gruntmeir
1939	PSY	1113.03	Elem Psych*	1/17/2012	5/11/2012	ONLINE	ONLINE	ONLINE	MM132	Gruntmeir
1315	PSY	2001.01	Clg Transfer**	1/17/2012	5/11/2012	ARR	ARR	ARR	S107A	French
1940	PSY	2033.01	Adolescent Psych*	1/17/2012	5/11/2012	ONLINE	ONLINE	ONLINE	MM132	Landolfi
1311	PSY	2043.01	Social Psych	1/17/2012	5/11/2012	M W F	10:00am	10:50am	AS120	Yarbrough
1312	PSY	2163.01	Dvpmntl Psych	1/17/2012	3/9/2012	R	06:00pm	10:00pm	MM207	Simon
1314	PSY	2163.03	Dvpmntl Psych	1/17/2012	5/11/2012	T R	11:00am	12:15pm	MM207	Corbett
1313	PSY	2163.05	Dvpmntl Psych	1/17/2012	5/11/2012	M W F	09:00am	09:50am	AS120	Yarbrough

\*Students taking an ONLINE Course, see the box on page 3 for instructions

\*\*Instructor permission required

### SOCIOLOGY

1401	SOC	1113.01	Intro Sociology	1/17/2012	5/11/2012	M W F	10:00am	10:50am	AS206	Simon
1402	SOC	1113.02	Intro Sociology	3/12/2012	5/11/2012	M W F	12:00pm	01:50pm	N108	Simon
1403	SOC	1113.03	Intro Sociology	1/17/2012	5/11/2012	T R	09:30am	10:45am	AS120	Meacham
1706	SOC	1113.04	Intro Sociology	1/17/2012	3/9/2012	W	06:00pm	10:00pm	ANDRKO	Schwarz
1405	SOC	1113.05	Intro Sociology	1/17/2012	5/11/2012	M W F	11:00am	11:50am	AS207	Yarbrough
1729	SOC	1113.06	Intro Sociology	1/17/2012	3/9/2012	W	06:00pm	10:00pm	CHCKTC	Schwarz
1406	SOC	1113.07	Intro Sociology	1/17/2012	5/11/2012	T R	08:00am	09:15am	AS206	Meacham
1411	SOC	1113.08	Intro Sociology	1/17/2012	5/11/2012	M W F	12:00pm	12:50pm	MM208	Yarbrough
1710	SOC	1113.10	Intro Sociology	1/17/2012	5/11/2012	M W F	12:00pm	12:50pm	CANTON	Yarbrough
1730	SOC	1113.12	Intro Sociology	1/17/2012	5/11/2012	T R	08:00am	09:15am	CASHIN	Meacham
1404	SOC	1113.16	Intro Sociology	1/17/2012	3/9/2012	W	06:00pm	10:00pm	MM129	Schwarz
9050	SOC	1113.17	Intro Sociology	1/17/2012	5/11/2012	M W F	07:35am	08:25am	YUKON	French
9033	SOC	1113.18	Intro Sociology	1/17/2012	5/11/2012	T R	08:00am	09:15am	MUSTNG	Lopez
9034	SOC	1113.19	Intro Sociology	1/17/2012	5/11/2012	M W	01:00pm	02:15pm	MUSTNG	Lopez
1978	SOC	1113.15	Intro Sociology*	1/17/2012	5/11/2012	ONLINE	ONLINE	ONLINE	MM132	Evans
1944	SOC	2133.02	Crime & Delinquency*	1/17/2012	5/11/2012	ONLINE	ONLINE	ONLINE	MM132	Gruntmeir

Seq #	Dept	Num.Sec	Title	Start Date	Stop Date	Days	Start Time	End Time	Location	Instructor
1409	SOC	2183.01	Soc of Family	1/17/2012	5/11/2012	T R	11:00am	12:15pm	AS206	Meacham
1987	SOC	2183.02	Soc of Family*	1/17/2012	5/11/2012	ONLINE	ONLINE	ONLINE	MM132	Evans
1407	SOC	2183.03	Soc of Family	3/12/2012	5/11/2012	R	06:00pm	10:00pm	MM207	Simon

\*Students taking an ONLINE Course, see the box on page 3 for instructions

### SPANISH

3676	SPA	1125.01	Beg Spanish II	1/17/2012	5/11/2012	T R	06:00pm	08:30pm	AS207	Valdes
------	-----	---------	----------------	-----------	-----------	-----	---------	---------	-------	--------

### SPEECH

3601	SPCH	1113.01	Fund Speech	1/17/2012	5/11/2012	M W F	09:00am	09:50am	AGH102	Mueggenborg
3602	SPCH	1113.02	Fund Speech	3/12/2012	5/11/2012	M	06:00pm	10:00pm	AS207	Schroder
3607	SPCH	1113.03	Fund Speech	1/17/2012	5/11/2012	T R	11:00am	12:15pm	S109	Mueggenborg
3603	SPCH	1113.05	Fund Speech	1/17/2012	5/11/2012	M W F	11:00am	11:50am	S109	Mueggenborg
3604	SPCH	1113.06	Fund Speech	1/17/2012	5/11/2012	M W F	12:00pm	12:50pm	S109	Mueggenborg
3605	SPCH	1113.07	Fund Speech***	1/17/2012	3/9/2012	R ONLINE	06:00pm ONLINE	10:00pm ONLINE	S109 MM132	Mueggenborg
9051	SPCH	1113.08	Fund Speech	1/17/2012	5/11/2012	M W F	01:40pm	02:30pm	YUKON	Lardner
9048	SPCH	1113.13	Fund Speech	1/17/2012	3/9/2012	T	06:00pm	10:00pm	YUKON	Bricker
1964	SPCH	2133.01	Intrprsnl Comm*	1/17/2012	5/11/2012	ONLINE	ONLINE	ONLINE	MM132	Hoge
1991	SPCH	2333.01	Group Discussion*	1/17/2012	5/11/2012	ONLINE	ONLINE	ONLINE	MM132	Hoge

\*Students taking an ONLINE Course, see the box on page 3 for instructions

\*\*\*Mandatory Campus Sessions: 1/19, 1/26, 2/09, 2/23 and 3/01

### SOCIAL STUDIES

1071	SS	2233.01	SS Capstone	1/17/2012	5/11/2012	T R	11:00am	12:15pm	N108	Tabor
------	----	---------	-------------	-----------	-----------	-----	---------	---------	------	-------

### VITICULTURE

4704	VIN	2101.01	Viticultr Practicum**	1/17/2012	5/11/2012	ARR	ARR	ARR	H101	Snyder
4705	VIN	2102.01	Viticultr Practicum**	1/17/2012	5/11/2012	ARR	ARR	ARR	H101	Snyder
4706	VIN	2103.01	Viticultr Practicum**	1/17/2012	5/11/2012	ARR	ARR	ARR	H101	Snyder
4713	VIN	2104.01	Viticultr Practicum**	1/17/2012	5/11/2012	ARR	ARR	ARR	H101	Snyder
4714	VIN	2221.01	Vineyard Technology	4/6/2012	4/7/2012	SN	09:00am	05:00pm	H101	Snyder
4712	VIN	2231.01	Soil/Irrigation/Nutr	1/21/2012	1/22/2012	SN	09:00am	05:00pm	H101	Snyder
1986	VIN	2962.01	Vnyrd/Winery Mktng*	2/6/2012	5/11/2012	ONLINE	ONLINE	ONLINE	MM132	Held
1985	VIN	2972.01	Winery Taste Rm Mgmt*	2/6/2012	5/11/2012	ONLINE	ONLINE	ONLINE	MM132	Snyder

\*Students taking an ONLINE Course, see the box on page 3 for instructions

\*\*Contact the instructor first week of class

### ZOOLOGY

4501	ZOOL	2134.01	Anatomy w/ Lab	1/17/2012	5/11/2012	T R R	06:00pm 07:30pm	07:15pm 09:20pm	AS208 AS107	Klepper
4503	ZOOL	2134.02	Anatomy w/ Lab	1/17/2012	5/11/2012	T R T	10:00am 08:00am	11:15am 09:50am	AS208 AS107	Klepper
4505	ZOOL	2134.03	Anatomy w/ Lab	1/17/2012	5/11/2012	T R R	10:00am 08:00am	11:15am 09:50am	AS208 AS107	Klepper
4507	ZOOL	2144.01	Physiology w/ Lab	1/17/2012	5/11/2012	T R T	09:30am 11:00am	10:45am 12:50pm	AS207 AS107	Slagell-Gossen
4509	ZOOL	2144.02	Physiology w/ Lab	1/17/2012	5/11/2012	T R R	09:30am 11:00am	10:45am 12:50pm	AS207 AS107	Slagell-Gossen
4513	ZOOL	2144.04	Physiology w/ Lab	1/17/2012	5/11/2012	M W W	06:00pm 07:30pm	07:15pm 09:20pm	AS107 AS107	Staff

For list and price of required textbooks go to: [www.redlandsc.edu/tuition-and-fees](http://www.redlandsc.edu/tuition-and-fees)

Seq #	Dept	Num.Sec	Title	Start Date	Stop Date	Days	Start Time	End Time	Location	Instructor
-------	------	---------	-------	------------	-----------	------	------------	----------	----------	------------

## ONLINE COURSES

*Note: Students taking Online Course, see the box on page 3 for instructions.*

1911	ACCT	2173.02	Financial Acct	1/17/2012	5/11/2012	ONLINE	ONLINE	ONLINE	MM132	Staff
1969	ACCT	2183.02	Managerial Acct	1/17/2012	5/11/2012	ONLINE	ONLINE	ONLINE	MM132	Staff
1901	AHS	1123.01	Medical Term	1/17/2012	5/11/2012	ONLINE	ONLINE	ONLINE	MM132	Wix
1937	AHS	2013.02	Nutrition	1/17/2012	5/11/2012	ONLINE	ONLINE	ONLINE	MM132	Funderburg
1902	AHS	2113.01	Pharmacology	1/17/2012	5/11/2012	ONLINE	ONLINE	ONLINE	MM132	Cash
1915	AMT	1043.04	Document Formatting	1/17/2012	5/11/2012	ONLINE	ONLINE	ONLINE	MM132	Cary
1938	AMT	2153.04	Word Procs I	1/17/2012	5/11/2012	ONLINE	ONLINE	ONLINE	MM132	Kitchen
1950	AMT	2163.01	Admin Office Mgmt	1/17/2012	5/11/2012	ONLINE	ONLINE	ONLINE	MM132	Ratterman
1958	AMT	2253.01	Law Office Tech	1/17/2012	5/11/2012	ONLINE	ONLINE	ONLINE	MM132	Warren
1959	AMT	2433.01	Legal Terminology	1/17/2012	5/11/2012	ONLINE	ONLINE	ONLINE	MM132	Warren
1904	ART	1113.01	Art Apprec I	1/3/2012	1/13/2012	ONLINE	ONLINE	ONLINE	MM132	Wynia-Wedel
1926	ART	1113.03	Art Apprec I	1/17/2012	5/11/2012	ONLINE	ONLINE	ONLINE	MM132	Wright
1905	ART	1123.03	Art Apprec II	1/17/2012	5/11/2012	ONLINE	ONLINE	ONLINE	MM132	Wynia-Wedel
1993	ART	1123.04	Art Apprec II	1/17/2012	5/11/2012	ONLINE	ONLINE	ONLINE	MM132	Wynia-Wedel
1903	BISC	1113.01	Biological Concepts	1/17/2012	5/11/2012	ONLINE	ONLINE	ONLINE	MM132	Staff
1908	BUS	1053.01	Bus Math	1/17/2012	5/11/2012	ONLINE	ONLINE	ONLINE	MM132	Warren
1953	BUS	1103.02	Intro to Bus	1/17/2012	5/11/2012	ONLINE	ONLINE	ONLINE	MM132	Staff
1954	BUS	1353.01	Bus Ethics	1/17/2012	5/11/2012	ONLINE	ONLINE	ONLINE	MM132	Staff
1929	BUS	2093.05	Bus Comm	1/17/2012	5/11/2012	ONLINE	ONLINE	ONLINE	MM132	Schroder
1955	BUS	2163.01	Business Law	1/17/2012	5/11/2012	ONLINE	ONLINE	ONLINE	MM132	Rupp
1910	BUS	2513.01	Business Stat	1/17/2012	5/11/2012	ONLINE	ONLINE	ONLINE	MM132	McMindes
1909	CD	2023.02	Nutr/Hlth/Sfty Chld	1/17/2012	5/11/2012	ONLINE	ONLINE	ONLINE	MM132	Storm
1912	CD	2053.01	Chld Grwth & Dev	1/17/2012	5/11/2012	ONLINE	ONLINE	ONLINE	MM132	Evans
1914	CD	2063.04	Bhv Guid Yng Chld	1/17/2012	5/11/2012	ONLINE	ONLINE	ONLINE	MM132	Lively
1913	CD	2073.02	Music/Mvmt/Crt Arts	3/12/2012	5/11/2012	ONLINE	ONLINE	ONLINE	MM132	Lively
1928	CD	2183.02	Lang/Social Skls	1/17/2012	5/11/2012	ONLINE	ONLINE	ONLINE	MM132	Evans
1918	CJ	1113.04	Intro to C J	1/17/2012	5/11/2012	ONLINE	ONLINE	ONLINE	MM132	Hobson
1965	CJ	2043.02	CJ Rpt Writing	1/17/2012	5/11/2012	ONLINE	ONLINE	ONLINE	MM132	Rupp
1974	CJ	2053.01	Org Crime/Gangs	1/17/2012	5/11/2012	ONLINE	ONLINE	ONLINE	MM132	Hobson
1943	CJ	2201.01	Probs: Crmnl Just	1/17/2012	5/11/2012	ONLINE	ONLINE	ONLINE	MM132	Hobson
1945	CJ	2202.01	Probs: Crmnl Just	1/17/2012	5/11/2012	ONLINE	ONLINE	ONLINE	MM132	Hobson
1946	CJ	2203.01	Probs: Crmnl Just	1/17/2012	5/11/2012	ONLINE	ONLINE	ONLINE	MM132	Hobson
1952	CJ	2204.01	Probs: Crmnl Just	1/17/2012	5/11/2012	ONLINE	ONLINE	ONLINE	MM132	Hobson
1972	CJ	2333.01	Police Org/Mgmt	1/17/2012	5/11/2012	ONLINE	ONLINE	ONLINE	MM132	Storm
1962	CJ	2343.02	Crmnl Investigation	1/17/2012	5/11/2012	ONLINE	ONLINE	ONLINE	MM132	Storm
1921	CJ	2353.01	Adm Corr Inst	1/17/2012	5/11/2012	ONLINE	ONLINE	ONLINE	MM132	Hobson
1966	CJ	2433.02	Cmnty Cul Div	1/17/2012	5/11/2012	ONLINE	ONLINE	ONLINE	MM132	Storm
1922	CJ	2443.02	Crmnl Law & Proc	1/17/2012	5/11/2012	ONLINE	ONLINE	ONLINE	MM132	Struckle
1923	CJ	2453.01	Prob/Prle/Cmnty Trmt	1/17/2012	5/11/2012	ONLINE	ONLINE	ONLINE	MM132	Hobson
1924	CMSC	1223.02	Bus Appl Sftwr	1/17/2012	5/11/2012	ONLINE	ONLINE	ONLINE	MM132	Warren
1956	CMSC	1223.10	Bus Appl Sftwr	1/17/2012	5/11/2012	ONLINE	ONLINE	ONLINE	MM132	Warren
1990	CMSC	1233.09	Sprdshst Appl	1/17/2012	5/11/2012	ONLINE	ONLINE	ONLINE	MM132	Warren
1957	CMSC	1243.01	Database Appl	1/17/2012	5/11/2012	ONLINE	ONLINE	ONLINE	MM132	Dawson
1951	COM	0133.01	Basic Col Reading	1/17/2012	5/11/2012	ONLINE	ONLINE	ONLINE	MM132	Staff
1907	ECM	2123.01	EC Finan Plng/Mgmt	1/17/2012	5/11/2012	ONLINE	ONLINE	ONLINE	MM132	Cary
1992	ECON	1353.01	Prsnl Finance	1/17/2012	5/11/2012	ONLINE	ONLINE	ONLINE	MM132	Staff
1960	ECON	2193.01	Prin Macroecon	1/17/2012	5/11/2012	ONLINE	ONLINE	ONLINE	MM132	Cary
1961	ECON	2203.02	Prin Microecon	1/17/2012	5/11/2012	ONLINE	ONLINE	ONLINE	MM132	Cary
1947	ENGL	0133.02	Bsc Coll Wrting	1/17/2012	5/11/2012	ONLINE	ONLINE	ONLINE	MM132	Staff

Seq #	Dept	Num.Sec	Title	Start Date	Stop Date	Days	Start Time	End Time	Location	Instructor
1925	ENGL	1101.03	Library/Resrch Skls	1/17/2012	3/9/2012	ONLINE	ONLINE	ONLINE	MM132	Dettlaff
1933	ENGL	1101.04	Library/Resrch Skls	3/12/2012	5/11/2012	ONLINE	ONLINE	ONLINE	MM132	Dettlaff
1941	ENGL	1113.08	Engl Comp I	1/17/2012	5/11/2012	ONLINE	ONLINE	ONLINE	MM132	Meeker
1973	ENGL	1113.10	Engl Comp I	1/17/2012	5/11/2012	ONLINE	ONLINE	ONLINE	MM132	Rupp. Z. A.
1930	ENGL	1113.15	Engl Comp I	1/17/2012	5/11/2012	ONLINE	ONLINE	ONLINE	MM132	Due
1949	ENGL	1113.18	Engl Comp I	1/17/2012	5/11/2012	ONLINE	ONLINE	ONLINE	MM132	Rupp. Z. A.
1931	ENGL	1213.07	Engl Comp II	1/17/2012	5/11/2012	ONLINE	ONLINE	ONLINE	MM132	Barger
1906	ENGL	1213.10	Engl Comp II	1/17/2012	5/11/2012	ONLINE	ONLINE	ONLINE	MM132	Snyder
1804	ENGL	1213.31	Engl Comp II	1/17/2012	5/11/2012	ONLINE	ONLINE	ONLINE	MM132	Hawk
1942	ENGL	1213.34	Engl Comp II	1/17/2012	5/11/2012	ONLINE	ONLINE	ONLINE	MM132	Rupp
1932	ENGL	2423.01	Intro Fiction	1/17/2012	5/11/2012	ONLINE	ONLINE	ONLINE	MM132	Hasley
1802	ENGL	2453.01	Intro to Poetry	1/17/2012	5/11/2012	ONLINE	ONLINE	ONLINE	MM132	Rupp
1919	GEG	2253.01	World Reg Geography	1/17/2012	5/11/2012	ONLINE	ONLINE	ONLINE	MM132	Medley
1917	GEOL	1054.01	Phys Geology w/ Lab	1/17/2012	5/11/2012	ONLINE S	ONLINE 08:00am	ONLINE 05:00pm	MM132 AS224	Staff
1977	GEOL	1054.02	Phys Geology w/ Lab	1/17/2012	5/11/2012	ONLINE S	ONLINE 08:00am	ONLINE 05:00pm	MM132 AS224	Staff
1934	HIST	1493.07	US Hist sn 1877	3/12/2012	5/11/2012	ONLINE	ONLINE	ONLINE	MM132	Tabor
1948	HIST	1493.08	US Hist sn 1877	1/17/2012	5/11/2012	ONLINE	ONLINE	ONLINE	MM132	Winterrowd
1975	HIST	1493.28	US Hist sn 1877	1/17/2012	5/11/2012	ONLINE	ONLINE	ONLINE	MM132	Winterrowd
1980	HIST	2133.01	West Civ sn 1500	1/17/2012	5/11/2012	ONLINE	ONLINE	ONLINE	MM132	Tabor
1989	HPER	1322.02	Personal Health	1/17/2012	5/11/2012	ONLINE	ONLINE	ONLINE	MM132	Staff
1981	HPER	1553.01	Lifetime Ftns/Mgmt	1/17/2012	5/11/2012	ONLINE	ONLINE	ONLINE	MM132	Staff
1982	HPER	2302.01	Coach Athletics	1/17/2012	5/11/2012	ONLINE	ONLINE	ONLINE	MM132	Staff
1983	HPER	2512.01	Adv Thry Bsktball	1/17/2012	5/11/2012	ONLINE	ONLINE	ONLINE	MM132	Staff
1984	HPER	2532.01	Adv Thry Baseball	1/17/2012	5/11/2012	ONLINE	ONLINE	ONLINE	MM132	Staff
1927	HUM	2113.05	Gen Hum I	1/17/2012	5/11/2012	ONLINE	ONLINE	ONLINE	MM132	Hasley
1968	HUM	2223.07	Gen Hum II	1/17/2012	5/11/2012	ONLINE	ONLINE	ONLINE	MM132	Hasley
1994	MATH	1493.02	Contemp Math	1/17/2012	5/11/2012	ONLINE	ONLINE	ONLINE	MM132	Bates
1935	MGMT	2033.02	Prin Mgmt	1/17/2012	5/11/2012	ONLINE	ONLINE	ONLINE	MM132	Staff
2905	MGMT	2103.01	Occ/Tech Internshp	1/17/2012	5/11/2012	ONLINE	ONLINE	ONLINE	MM132	Barger
1967	MGMT	2143.01	Bus Ldrshp	1/17/2012	5/11/2012	ONLINE	ONLINE	ONLINE	MM132	Schroder
2906	MGMT	2221.01	Job Acq/Intrnshp Skl	1/17/2012	5/11/2012	ONLINE	ONLINE	ONLINE	MM132	Barger
1936	PHIL	1113.02	Intro Phil	1/17/2012	5/11/2012	ONLINE	ONLINE	ONLINE	MM132	Hasley
1916	POLS	1113.08	US Government	3/12/2012	5/11/2012	ONLINE	ONLINE	ONLINE	MM132	Storm
1801	POLS	1113.13	US Government	1/17/2012	5/11/2012	ONLINE	ONLINE	ONLINE	MM132	Staff
1963	POLS	1113.15	US Government	1/17/2012	5/11/2012	ONLINE	ONLINE	ONLINE	MM132	Dickinson
1976	POLS	1113.16	US Government	1/17/2012	5/11/2012	ONLINE	ONLINE	ONLINE	MM132	Staff
1920	PSY	1113.02	Elem Psych	1/17/2012	5/11/2012	ONLINE	ONLINE	ONLINE	MM132	Gruntmeir
1939	PSY	1113.03	Elem Psych	1/17/2012	5/11/2012	ONLINE	ONLINE	ONLINE	MM132	Gruntmeir
1940	PSY	2033.01	Adolescent Psych	1/17/2012	5/11/2012	ONLINE	ONLINE	ONLINE	MM132	Landolfi
1970	PSY	2163.02	Dvpmntl Psych	1/3/2012	1/13/2012	ONLINE	ONLINE	ONLINE	MM132	Gruntmeir
1971	SOC	1113.11	Intro Sociology	1/3/2012	1/13/2012	ONLINE	ONLINE	ONLINE	MM132	Evans
1978	SOC	1113.15	Intro Sociology	1/17/2012	5/11/2012	ONLINE	ONLINE	ONLINE	MM132	Evans
1944	SOC	2133.02	Crime & Delinquency	1/17/2012	5/11/2012	ONLINE	ONLINE	ONLINE	MM132	Gruntmeir
1987	SOC	2183.02	Soc of Family	1/17/2012	5/11/2012	ONLINE	ONLINE	ONLINE	MM132	Evans
1964	SPCH	2133.01	Intrprsnl Comm	1/17/2012	5/11/2012	ONLINE	ONLINE	ONLINE	MM132	Hoge
1991	SPCH	2333.01	Group Discussion	1/17/2012	5/11/2012	ONLINE	ONLINE	ONLINE	MM132	Hoge
1986	VIN	2962.01	Vnyrd/Winery Mrktng	2/6/2012	5/11/2012	ONLINE	ONLINE	ONLINE	MM132	Held
1985	VIN	2972.01	Winery Taste Rm Mgmt	2/6/2012	5/11/2012	ONLINE	ONLINE	ONLINE	MM132	Snyder

Seq #	Dept	Num.Sec	Title	Start Date	Stop Date	Days	Start Time	End Time	Location	Instructor
<b>NIGHT CLASSES</b>										
9041	ART	1113.02	Art Apprec I	1/17/2012	3/9/2012	R	06:00pm	10:00pm	YUKON	Arnold
3165	ART	2093.01	Oil Painting I	3/12/2012	5/11/2012	T R	06:00pm	08:30pm	AS128	Rose
3158	ART	2103.01	Oil Painting II	3/12/2012	5/11/2012	T R	06:00pm	08:30pm	AS128	Rose
3160	ART	2233.01	Pottery I	1/17/2012	3/9/2012	T R	06:00pm	08:30pm	AS125	Rose
3163	ART	2263.02	Pottery II	1/17/2012	3/9/2012	T R	06:00pm	08:30pm	AS125	Rose
9004	BISC	1114.05	Biology w/ Lab	1/17/2012	5/11/2012	T R T	06:00pm 07:30pm	07:15pm 09:20pm	KINGF KINGF	Staff
4201	BISC	1114.06	Biology w/ Lab	1/17/2012	5/11/2012	M W M	06:00pm 07:30pm	07:15pm 09:20pm	AS208 AS111	Staff
9052	CD	2183.03	Lang/Social Skls	3/12/2012	5/11/2012	T	06:00pm	10:00pm	YUKON	Landolfi
4273	CHEM	1215.01	Chem I w/ Lab	1/17/2012	5/11/2012	T R T	06:00pm 08:00pm	07:50pm 09:50pm	AS229 AS229	Staff
9053	CHEM	1315.03	Gen Chem I w/ Lab	1/17/2012	5/11/2012	T R T	06:00pm 08:00pm	07:50pm 09:50pm	YUKON YUKON	Staff
4270	CHEM	1315.04	Gen Chem I w/ Lab	1/17/2012	5/11/2012	M W M	06:00pm 08:00pm	07:50pm 09:50pm	AGH102 AS229	Frazier Frazier
2206	CMSC	1223.20	Bus Appl Sftwr	1/17/2012	3/9/2012	M	06:00pm	10:00pm	S115	Dawson
1713	COM	1213.01	Sign Lang I	1/17/2012	3/9/2012	M	06:00pm	10:00pm	SWOSU	Lesperance
3008	COM	1213.03	Sign Lang I	1/17/2012	3/9/2012	M	06:00pm	10:00pm	MM129	Lesperance
3005	COM	2113.01	Sign Lang II	3/12/2012	5/11/2012	M	06:00pm	10:00pm	MM129	Lesperance
1714	COM	2113.02	Sign Lang II	3/12/2012	5/11/2012	M	06:00pm	10:00pm	SWOSU	Lesperance
5004	EMT	1113.01	First Responder	1/17/2012	3/9/2012	S	06:00pm	10:00pm	OE134	Gonzales
5002	EMT	1118.03	EMT Basic	1/17/2012	5/11/2012	M WR	06:00pm	10:00pm	OE101	Bradshaw
5005	EMT	1129.01	EMT Advanced	1/17/2012	5/11/2012	T R	06:00pm	10:00pm	OE135	Burleigh
5009	EMT	2101.01	EMT: Basic Refresher	1/17/2012	2/10/2012	M W	06:00pm	10:00pm	OE102	Gonzales
5010	EMT	2121.01	EMT: Intrm Refresher	1/17/2012	3/1/2012	M W	06:00pm	10:00pm	OE102	Gonzales
5011	EMT	2131.01	Paramedic Refresher	1/17/2012	4/1/2012	M W	06:00pm	10:00pm	OE102	Gonzales
3305	ENGL	0123.03	Fund of Engl	1/17/2012	5/11/2012	T R	05:30pm	06:45pm	MM210	Staff
3321	ENGL	0133.04	Bsc Clg Wrting	1/17/2012	5/11/2012	T R	06:00pm	07:15pm	MM210	Staff
3307	ENGL	1113.02	Engl Comp I	1/17/2012	3/9/2012	T	06:00pm	10:00pm	MM209	Hawk
3310	ENGL	1113.05	Engl Comp I	1/17/2012	3/9/2012	R	06:00pm	10:00pm	AS205	Summers
9045	ENGL	1113.12	Engl Comp I	1/17/2012	3/8/2012	M	06:00pm	10:00pm	YUKON	Lewellen
9001	ENGL	1213.03	Engl Comp II	1/17/2012	5/11/2012	M W	05:30pm	06:45pm	KINGF	Fuller
3325	ENGL	1213.14	Engl Comp II	3/12/2012	5/11/2012	T	06:00pm	10:00pm	MM209	Hawk
3322	ENGL	1213.11	Engl Comp II	3/12/2012	5/11/2012	R	06:00pm	10:00pm	AS205	Summers
9055	ENGL	1213.36	Engl Comp II	3/12/2012	5/11/2012	M	06:00pm	10:00pm	YUKON	Lewellen
9043	HIST	1493.01	US Hist sn 1877	1/17/2012	5/11/2012	M	06:00pm	08:50pm	YUKON	Harris
1104	HIST	1493.04	US Hist sn 1877	1/17/2012	5/11/2012	R	06:00pm	08:50pm	AS206	Staff
9003	HIST	1493.13	US Hist sn 1877	1/17/2012	5/11/2012	T	05:30pm	08:20pm	KINGF	Kopp
1701	HIST	1493.15	US Hist sn 1877	1/17/2012	5/11/2012	R	06:00pm	08:50pm	ANDRKO	Staff
1739	HIST	1493.22	US Hist sn 1877	1/17/2012	5/11/2012	R	06:00pm	08:50pm	CHCKTC	Staff
1762	HIST	1493.25	US Hist sn 1877	1/17/2012	5/11/2012	R	06:00pm	08:50pm	FTCOBB	Staff
9044	HUM	2173.02	Beliefs/Believers	3/12/2012	5/11/2012	R	06:00pm	10:00pm	YUKON	Arnold
3103	HUM	2223.01	Gen Hum II	1/17/2012	5/11/2012	M	06:00pm	08:50pm	MM208	Wright
1717	HUM	2223.03	Gen Hum II	1/17/2012	5/11/2012	M	06:00pm	08:50pm	FTCOBB	Wright
1718	HUM	2223.06	Gen Hum II	1/17/2012	5/11/2012	M	06:00pm	08:50pm	ANDRKO	Wright
1737	HUM	2223.09	Gen Hum II	1/17/2012	5/11/2012	M	06:00pm	08:50pm	CHCKTC	Wright
4404	MATH	0103.03	Gen Clg Math	1/17/2012	5/11/2012	M W	06:00pm	07:15pm	MM214	Staff
4408	MATH	0113.03	Bsc Algebra	1/17/2012	5/11/2012	M W	07:30pm	08:45pm	AS206	Staff
4413	MATH	0123.03	Interm Algebra	1/17/2012	5/11/2012	M W	06:00pm	07:15pm	AS206	Staff
9002	MATH	1513.05	Clg Algebra	1/17/2012	5/11/2012	M W	07:00pm	08:15pm	KINGF	Golbek
4409	MATH	1513.23	Clg Algebra	1/17/2012	5/11/2012	M W	06:00pm	07:15pm	AS205	Staff

Seq #	Dept	Num.Sec	Title	Start Date	Stop Date	Days	Start Time	End Time	Location	Instructor
9056	MATH	1513.27	Clg Algebra	1/17/2012	5/11/2012	T R	06:00pm	07:15pm	YUKON	Staff
386	MICR	2134.04	Intro Microbio w/Lab	1/17/2012	5/11/2012	M W M	06:00pm 07:30pm	07:15pm 09:20pm	AS116 AS116	Fogle
4001	PHSC	1114.01	Phys Sci w/ Lab	1/17/2012	5/11/2012	M W W	06:00pm 07:30pm	07:15pm 09:20pm	AS224 AS224	Staff
1206	POLS	1113.12	US Government	1/17/2012	5/11/2012	T	06:00pm	08:50pm	MM208	Staff
1707	PSY	1113.10	Elem Psych	3/12/2012	5/11/2012	W	06:00pm	10:00pm	ANDRKO	Schwarz
1712	PSY	1113.11	Elem Psych	3/12/2012	5/11/2012	W	06:00pm	10:00pm	CHCKTC	Schwarz
1309	PSY	1113.13	Elem Psych	3/12/2012	5/11/2012	W	06:00pm	10:00pm	MM129	Schwarz
1312	PSY	2163.01	Dvpmntl Psych	1/17/2012	3/9/2012	R	06:00pm	10:00pm	MM207	Simon
1706	SOC	1113.04	Intro Sociology	1/17/2012	3/9/2012	W	06:00pm	10:00pm	ANDRKO	Schwarz
1729	SOC	1113.06	Intro Sociology	1/17/2012	3/9/2012	W	06:00pm	10:00pm	CHCKTC	Schwarz
1404	SOC	1113.16	Intro Sociology	1/17/2012	3/9/2012	W	06:00pm	10:00pm	MM129	Schwarz
1407	SOC	2183.03	Soc of Family	3/12/2012	5/11/2012	R	06:00pm	10:00pm	MM207	Simon
3676	SPA	1125.01	Beg Spanish II	1/17/2012	5/11/2012	T R	06:00pm	08:30pm	AS207	Valdes
3602	SPCH	1113.02	Fund Speech	3/12/2012	5/11/2012	M	06:00pm	10:00pm	AS207	Schroder
3605	SPCH	1113.07	Fund Speech***	1/17/2012	3/9/2012	R ONLINE	06:00pm ONLINE	10:00pm ONLINE	S109 MM132	Mueggenborg
9048	SPCH	1113.13	Fund Speech	1/17/2012	3/9/2012	T	06:00pm	10:00pm	YUKON	Bricker
501	ZOOL	2134.01	Anatomy w/ Lab	1/17/2012	5/11/2012	T R R	06:00pm 07:30pm	07:15pm 09:20pm	AS208 AS107	Klepper
4513	ZOOL	2144.04	Physiology w/ Lab	1/17/2012	5/11/2012	M W W	06:00pm 07:30pm	07:15pm 09:20pm	AS107 AS107	Staff

\*\*\*Mandatory Campus Sessions: 1/19, 1/26, 2/09, 2/23 and 3/01

### FIRST EIGHT WEEKS

4153	ANSI	2123.01	Lvstk Feeding	1/17/2012	3/9/2012	M W	03:00pm	04:50pm	RRCB08	Zweiacher
9041	ART	1113.02	Art Apprec I	1/17/2012	3/9/2012	R	06:00pm	10:00pm	YUKON	Arnold
3160	ART	2233.01	Pottery I	1/17/2012	3/9/2012	T R	06:00pm	08:30pm	AS125	Rose
3163	ART	2263.02	Pottery II	1/17/2012	3/9/2012	T R	06:00pm	08:30pm	AS125	Rose
2201	CMSC	1223.01	Bus Appl Sftwr	1/17/2012	3/9/2012	M W F	08:00am	09:50am	S115	Evert
2206	CMSC	1223.20	Bus Appl Sftwr	1/17/2012	3/9/2012	M	06:00pm	10:00pm	S115	Dawson
1713	COM	1213.01	Sign Lang I	1/17/2012	3/9/2012	M	06:00pm	10:00pm	SWOSU	Lesperance
3008	COM	1213.03	Sign Lang I	1/17/2012	3/9/2012	M	06:00pm	10:00pm	MM129	Lesperance
2402	ECON	2193.02	Prin Macroecon	1/17/2012	3/9/2012	M W F	09:00am	10:50am	AS208	Staff
5004	EMT	1113.01	First Responder	1/17/2012	3/9/2012	S	06:00pm	10:00pm	OE134	Gonzales
5011	EMT	2131.01	Paramedic Refresher	1/17/2012	4/1/2012	M W	06:00pm	10:00pm	OE102	Gonzales
1925	ENGL	1101.03	Library/Resrch Skls*	1/17/2012	3/9/2012	ONLINE	ONLINE	ONLINE	MM132	Dettlaff
3307	ENGL	1113.02	Engl Comp I	1/17/2012	3/9/2012	T	06:00pm	10:00pm	MM209	Hawk
3310	ENGL	1113.05	Engl Comp I	1/17/2012	3/9/2012	R	06:00pm	10:00pm	AS205	Summers
9045	ENGL	1113.12	Engl Comp I	1/17/2012	3/8/2012	M	06:00pm	10:00pm	YUKON	Lewellen
6008	HPER	1201.01	Supercircuit**	1/17/2012	3/9/2012	ARR	ARR	ARR	PE02	Staff
4415	MATH	0123.05	Interm Algebra	1/17/2012	3/9/2012	M W F	10:00am	11:50am	N106	Clifton
4405	MATH	0153.01	Math Prep	1/17/2012	3/9/2012	M W F	10:00am	11:50am	S105	McMindes
5219	NURS	1211.01	Adlt Hlth Clin Exp**	1/17/2012	3/9/2012	ARR	ARR	ARR	OE135	Staff

Seq #	Dept	Num.Sec	Title	Start Date	Stop Date	Days	Start Time	End Time	Location	Instructor
5218	NURS	1211.02	Adlt Hlth Clin Exp**	1/17/2012	3/9/2012	ARR	ARR	ARR	OE135	Staff
5217	NURS	1211.03	Adlt Hlth Clin Exp**	1/17/2012	3/9/2012	ARR	ARR	ARR	OE135	Staff
5216	NURS	1211.04	Adlt Hlth Clin Exp**	1/17/2012	3/9/2012	ARR	ARR	ARR	OE135	Staff
5215	NURS	1211.05	Adlt Hlth Clin Exp**	1/17/2012	3/9/2012	ARR	ARR	ARR	OE135	Staff
5214	NURS	1211.06	Adlt Hlth Clin Exp**	1/17/2012	3/9/2012	ARR	ARR	ARR	OE135	Staff
5213	NURS	1211.07	Adlt Hlth Clin Exp**	1/17/2012	3/9/2012	ARR	ARR	ARR	OE135	Staff
5221	NURS	1223.01	Adlt Hlth Prb w/ Lab	1/17/2012	3/9/2012	M W MTWR	08:00am 01:00pm	12:00pm 05:00pm	OE135	Henke
5236	NURS	2241.01	Psych Care Clin Exp**	1/17/2012	3/9/2012	ARR	ARR	ARR	OE134	Staff
5237	NURS	2241.02	Psych Care Clin Exp**	1/17/2012	3/9/2012	ARR	ARR	ARR	OE134	Staff
5238	NURS	2241.03	Psych Care Clin Exp**	1/17/2012	3/9/2012	ARR	ARR	ARR	OE134	Staff
5211	NURS	2241.04	Psych Care Clin Exp**	1/17/2012	3/9/2012	ARR	ARR	ARR	OE134	Staff
5212	NURS	2241.05	Psych Care Clin Exp**	1/17/2012	3/9/2012	ARR	ARR	ARR	OE134	Staff
5229	NURS	2243.01	Psych Care w/ Lab	1/17/2012	3/9/2012	M W MTWR	08:00am 01:00pm	12:00pm 05:00pm	OE134	Dowdle
1204	POLS	1113.06	US Government	1/17/2012	3/9/2012	M W F	10:00am	11:50am	N108	Gorden
1302	PSY	1113.01	Elem Psych	1/17/2012	3/9/2012	M W F	12:00pm	01:50pm	N108	Simon
1312	PSY	2163.01	Dvpmntl Psych	1/17/2012	3/9/2012	R	06:00pm	10:00pm	MM207	Simon
1706	SOC	1113.04	Intro Sociology	1/17/2012	3/9/2012	W	06:00pm	10:00pm	ANDRKO	Schwarz
1729	SOC	1113.06	Intro Sociology	1/17/2012	3/9/2012	W	06:00pm	10:00pm	CHCKTC	Schwarz
1404	SOC	1113.16	Intro Sociology	1/17/2012	3/9/2012	W	06:00pm	10:00pm	MM129	Schwarz
3605	SPCH	1113.07	Fund Speech***	1/17/2012	3/9/2012	R ONLINE	06:00pm ONLINE	10:00pm ONLINE	S109 MM132	Mueggenborg
9048	SPCH	1113.13	Fund Speech	1/17/2012	3/9/2012	T	06:00pm	10:00pm	YUKON	Bricker

\*Students taking an ONLINE Course, see the box on page 3 for instructions

\*\*Contact the instructor first week of class

\*\*\*Mandatory Campus Sessions: 1/19, 1/26, 2/09, 2/23 and 3/01

### SECOND EIGHT WEEKS

3165	ART	2093.01	Oil Painting I	3/12/2012	5/11/2012	T R	06:00pm	08:30pm	AS128	Rose
3158	ART	2103.01	Oil Paintng II	3/12/2012	5/11/2012	T R	06:00pm	08:30pm	AS128	Rose
1913	CD	2073.02	Music/Mvmt/Crt Arts*	3/12/2012	5/11/2012	ONLINE	ONLINE	ONLINE	MM132	Lively
9115	CD	2173.01	Cognit Skls Chldrn	3/12/2012	5/11/2012	MTWRF	08:00am	05:00pm	CKTC	Rexroat
9052	CD	2183.03	Lang/Social Skls	3/12/2012	5/11/2012	T	06:00pm	10:00pm	YUKON	Landolfi
3005	COM	2113.01	Sign Lang II	3/12/2012	5/11/2012	M	06:00pm	10:00pm	MM129	Lesperance
1714	COM	2113.02	Sign Lang II	3/12/2012	5/11/2012	M	06:00pm	10:00pm	SWOSU	Lesperance
2403	ECON	2203.01	Prin Microecon	3/12/2012	5/11/2012	M W F	09:00am	10:50am	AS208	Staff
1933	ENGL	1101.04	Library/Resrch Skls*	3/12/2012	5/11/2012	ONLINE	ONLINE	ONLINE	MM132	Dettlaff
3322	ENGL	1213.11	Engl Comp II	3/12/2012	5/11/2012	R	06:00pm	10:00pm	AS205	Summers
3325	ENGL	1213.14	Engl Comp II	3/12/2012	5/11/2012	T	06:00pm	10:00pm	MM209	Hawk
9055	ENGL	1213.36	Engl Comp II	3/12/2012	5/11/2012	M	06:00pm	10:00pm	YUKON	Lewellen
1934	HIST	1493.07	US Hist sn 1877*	3/12/2012	5/11/2012	ONLINE	ONLINE	ONLINE	MM132	Tabor
6009	HPER	1201.02	Supercircuit	3/12/2012	5/11/2012	ARR	ARR	ARR	PE02	Staff
6019	HPER	1553.02	Lifetime Ftns/Mgmt	3/12/2012	5/11/2012	M W F	08:00am	09:50am	S109	Staff
6022	HPER	2001.03	Lifeguarding	3/12/2012	5/11/2012	R R	05:00pm 08:00pm	09:30pm 09:30pm	PE10 PE28	Staff
3102	HUM	2173.01	Beliefs/Believers	3/12/2012	5/11/2012	M W F	10:00am	11:50am	N108	Gorden
9044	HUM	2173.02	Beliefs/Believers	3/12/2012	5/11/2012	R	06:00pm	10:00pm	YUKON	Arnold
4422	MATH	1513.09	Clg Algebra	3/12/2012	5/11/2012	M W F	10:00am	11:50am	S105	McMindes

Seq #	Dept	Num.Sec	Title	Start Date	Stop Date	Days	Start Time	End Time	Location	Instructor
5222	NURS	1233.01	PCN Nursing w/ Lab	3/12/2012	5/11/2012	M W MTWR	08:00am 01:00pm	12:00am 05:00pm	OE135 OE134	Henke
5230	NURS	1241.01	PCN Clinical Exp**	3/12/2012	5/11/2012	ARR	ARR	ARR	OE135	Staff
5227	NURS	1241.02	PCN Clinical Exp**	3/12/2012	5/11/2012	ARR	ARR	ARR	OE135	Staff
5226	NURS	1241.03	PCN Clinical Exp**	3/12/2012	5/11/2012	ARR	ARR	ARR	OE135	Staff
5225	NURS	1241.04	PCN Clinical Exp**	3/12/2012	5/11/2012	ARR	ARR	ARR	OE135	Staff
5224	NURS	1241.05	PCN Clinical Exp**	3/12/2012	5/11/2012	ARR	ARR	ARR	OE135	Staff
5223	NURS	1241.06	PCN Clinical Exp**	3/12/2012	5/11/2012	ARR	ARR	ARR	OE135	Staff
5204	NURS	2255.01	Ldrshp/Mgmt Nursing	3/12/2012	5/11/2012	M W MTWR	08:00am 01:00pm	12:00pm 05:00pm	OE135 OE134	Dowdle
5247	NURS	2261.01	Ldrshp/Mgmt Clin Exp**	3/12/2012	5/11/2012	ARR	ARR	ARR	OE134	Staff
5242	NURS	2261.02	Ldrshp/Mgmt Clin Exp**	3/12/2012	5/11/2012	ARR	ARR	ARR	OE134	Staff
5243	NURS	2261.03	Ldrshp/Mgmt Clin Exp**	3/12/2012	5/11/2012	ARR	ARR	ARR	OE134	Staff
1916	POLS	1113.08	US Government*	3/12/2012	5/11/2012	ONLINE	ONLINE	ONLINE	MM132	Storm
1707	PSY	1113.10	Elem Psych	3/12/2012	5/11/2012	W	06:00pm	10:00pm	ANDRKO	Schwarz
1712	PSY	1113.11	Elem Psych	3/12/2012	5/11/2012	W	06:00pm	10:00pm	CHCKTC	Schwarz
1309	PSY	1113.13	Elem Psych	3/12/2012	5/11/2012	W	06:00pm	10:00pm	MM129	Schwarz
1402	SOC	1113.02	Intro Sociology	3/12/2012	5/11/2012	M W F	12:00pm	01:50pm	N108	Simon
1407	SOC	2183.03	Soc of Family	3/12/2012	5/11/2012	R	06:00pm	10:00pm	MM207	Simon
3602	SPCH	1113.02	Fund Speech	3/12/2012	5/11/2012	M	06:00pm	10:00pm	AS207	Schroder

\*Students taking an ONLINE Course, see the box on page 3 for instructions

\*\*Contact the instructor first week of class

### FASTRACK: ONE YEAR ACCELERATED DEGREE CLASSES

2201	CMSC	1223.01	Bus Appl Sftwr	1/17/2012	3/9/2012	M W F	08:00am	09:50am	S115	Evert
1204	POLS	1113.06	US Government	1/17/2012	3/9/2012	M W F	10:00am	11:50am	N108	Gorden
1302	PSY	1113.01	Elem Psych	1/17/2012	3/9/2012	M W F	12:00pm	01:50pm	N108	Simon
6019	HPER	1553.02	Lifetime Ftns/Mgmt	3/12/2012	5/11/2012	M W F	08:00am	09:50am	S109	Staff
4422	MATH	1513.07	Clg Algebra	3/12/2012	5/11/2012	M W F	10:00am	11:50am	MM214	Bates
1402	SOC	1113.02	Intro Sociology	3/12/2012	5/11/2012	M W F	12:00pm	01:50pm	N108	Simon
1960	ECON	2193.01	Prin Macroecon*	1/17/2012	5/11/2012	ONLINE	ONLINE	ONLINE	MM132	Cary
1989	HPER	1322.02	Personal Health*	1/17/2012	5/11/2012	ONLINE	ONLINE	ONLINE	MM132	Staf

\*Students taking an ONLINE Course, see the box on page 3 for instructions

Seq #	Dept	Num.Sec	Title	Start Date	Stop Date	Days	Start Time	End Time	Location	Instructor
-------	------	---------	-------	------------	-----------	------	------------	----------	----------	------------

### OFF CAMPUS SITES

#### CLASSES TAUGHT BY SITE INSTRUCTOR OR BY INTERACTIVE EDUCATION TELEVISION (IETV)

AMBER-POCASSET - Amber-Pocasset High School. For concurrent enrollment see your high school counselor. For more information call 405-422-1417.

1703	POLS	1113.04	US Government	1/17/2012	5/11/2012	T R	08:00am	09:15am	AMBPOC	Rain
1702	PSY	1113.04	Elem Psych	1/17/2012	5/11/2012	M W F	09:00am	09:50am	AMBPOC	Mauldin

ANADARKO – Anadarko High School. For concurrent enrollment see your high school counselor. For more information call 405-422-1417.

1706	SOC	1113.04	Intro Sociology	1/17/2012	3/9/2012	W	06:00pm	10:00pm	ANDRKO	Schwarz
1704	ENGL	1213.22	Engl Comp II	1/17/2012	5/11/2012	M W F	09:00am	09:50am	ANDRKO	Stone
1701	HIST	1493.15	US Hist sn 1877	1/17/2012	5/11/2012	R	06:00pm	08:50pm	ANDRKO	Staff
1709	HIST	1493.11	US Hist sn 1877	1/17/2012	5/11/2012	M W F	08:00am	08:50am	ANDRKO	Tate
1718	HUM	2223.06	Gen Hum II	1/17/2012	5/11/2012	M	06:00pm	08:50pm	ANDRKO	Wright
1708	POLS	1113.11	US Government	1/17/2012	5/11/2012	T R	09:30am	10:45am	ANDRKO	Rain
1721	PSY	1113.05	Elem Psych	1/17/2012	5/11/2012	T R	12:30pm	01:45pm	ANDRKO	Corbett
1707	PSY	1113.10	Elem Psych	3/12/2012	5/11/2012	W	06:00pm	10:00pm	ANDRKO	Schwarz

ARNETT - Arnett High School. For concurrent enrollment see your high school counselor. For more information call 405-422-1417.

1711	ENGL	1213.13	Engl Comp II	1/17/2012	5/11/2012	T R	09:30am	10:45am	ARNETT	Dobry
1760	MATH	1513.22	Clg Algebra	1/17/2012	5/11/2012	T R	11:00am	12:15pm	ARNETT	Staff
1705	POLS	1113.01	US Government	1/17/2012	5/11/2012	T R	08:00am	09:15am	ARNETT	Rain

BURLINGTON - Burlington High School. For concurrent enrollment see your high school counselor. For more information call 405-422-1417.

1731	ENGL	1213.08	Engl Comp II	1/17/2012	5/11/2012	T R	08:00am	09:15am	BURLNG	Dobry
1732	MATH	1513.19	Clg Algebra	1/17/2012	5/11/2012	M W F	09:00am	09:50am	BURLNG	Staff

CANTON - Canton High School. For concurrent enrollment see your high school counselor. For more information call 405-422-1417.

1715	ENGL	1213.30	Engl Comp II	1/17/2012	5/11/2012	M W F	10:00am	10:50am	CANTON	Horton
1710	SOC	1113.10	Intro Sociology	1/17/2012	5/11/2012	M W F	12:00pm	12:50pm	CANTON	Yarbrough

CASHION – Cashion High School. For concurrent enrollment see your high school counselor. For more information call 405-422-1417.

1723	MATH	1513.03	Clg Algebra	1/17/2012	5/11/2012	M W F	08:00am	08:50am	CASHIN	Staff
1730	SOC	1113.12	Intro Sociology	1/17/2012	5/11/2012	T R	08:00am	09:15am	CASHIN	Meacham

CHICKASHA – Classes held at Canadian Valley Technology Center. For more information call 405-422-1417.

1729	SOC	1113.06	Intro Sociology	1/17/2012	3/9/2012	W	06:00pm	10:00pm	CHCKTC	Schwarz
1739	HIST	1493.22	US Hist sn 1877	1/17/2012	5/11/2012	R	06:00pm	08:50pm	CHCKTC	Staff
1737	HUM	2223.09	Gen Hum II	1/17/2012	5/11/2012	M	06:00pm	08:50pm	CHCKTC	Wright
1712	PSY	1113.11	Elem Psych	3/12/2012	5/11/2012	W	06:00pm	10:00pm	CHCKTC	Schwarz

CLINTON– Clinton High School. For concurrent enrollment see your high school counselor. For more information call 405-422-1417.

1716	ENGL	1113.01	Engl Comp I	1/17/2012	5/11/2012	M W F	11:00am	11:50am	CLNTON	Detlaff
------	------	---------	-------------	-----------	-----------	-------	---------	---------	--------	---------

CYRIL– Classes held at Cyril High School. For concurrent enrollment see your high school counselor. For more information call 405-422-1417.

1757	ENGL	1213.32	Engl Comp II	1/17/2012	5/11/2012	M W F	09:00am	09:50am	CYRIL	Stone
1756	MATH	1513.18	Clg Algebra	1/17/2012	5/11/2012	T R	11:00am	12:15pm	CYRIL	Staff

DOVER - Dover High School. For concurrent enrollment see your high school counselor. For more information call 405-422-1417.

1724	PSY	1113.08	Elem Psych	1/17/2012	5/11/2012	M W F	11:00am	11:50am	DOVER	Simon
------	-----	---------	------------	-----------	-----------	-------	---------	---------	-------	-------

FORT COBB – Classes held at Caddo Kiowa Technology Center. For more information call 405-422-1417.

1762	HIST	1493.25	US Hist sn 1877	1/17/2012	5/11/2012	R	06:00pm	08:50pm	FTCOBB	Staff
1717	HUM	2223.03	Gen Hum II	1/17/2012	5/11/2012	M	06:00pm	08:50pm	FTCOBB	Wright

FORT SUPPLY – Fort Supply High School. For concurrent enrollment see your high school counselor. For more information call 405-422-1417.

1722	HIST	1493.14	US Hist sn 1877	1/17/2012	5/11/2012	T R	11:00am	12:15pm	FTSPLY	Roberson
1734	PSY	1113.17	Elem Psych	1/17/2012	5/11/2012	M W F	11:00am	11:50am	FTSPLY	Simon

GEARY – Geary High School. For concurrent enrollment see your high school counselor. For more information call 405-422-1417.

1733	ENGL	1213.28	Engl Comp II	1/17/2012	5/11/2012	M W F	09:00am	09:50am	GEARY	Stone
1720	POLS	1113.14	US Government	1/17/2012	5/11/2012	M W F	12:00pm	12:50pm	GEARY	Gorden
1726	PSY	1113.16	Elem Psych	1/17/2012	5/11/2012	T R	12:30pm	01:45pm	GEARY	Corbett

KINGFISHER – Kingfisher High School. For concurrent enrollment see your high school counselor. For more information call 405-422-1417.

9004	BISC	1114.05	Biology w/ Lab	1/17/2012	5/11/2012	T R T	06:00pm 07:30pm	07:15pm 09:20pm	KINGF KINGF	Staff
9001	ENGL	1213.03	Engl Comp II	1/17/2012	5/11/2012	M W	05:30pm	06:45pm	KINGF	Fuller
9003	HIST	1493.13	US Hist sn 1877	1/17/2012	5/11/2012	T	05:30pm	08:20pm	KINGF	Kopp
9002	MATH	1513.05	Clg Algebra	1/17/2012	5/11/2012	M W	07:00pm	08:15pm	KINGF	Golbek
9005	HUM	2003.01	Sem: Northern Italy	3/9/2012	3/17/2012	ARR	ARR	ARR	KINGF	Schenk

Seq #	Dept	Num.Sec	Title	Start Date	Stop Date	Days	Start Time	End Time	Location	Instructor
LAVERNE – Laverne High School. For concurrent enrollment see your high school counselor. For more information call 405-422-1417.										
1728	ENGL	1213.21	Engl Comp II	1/17/2012	5/11/2012	M W F	10:00am	10:50am	LAVERN	Horton
1725	PSY	1113.18	Elem Psych	1/17/2012	5/11/2012	M W F	01:00pm	01:50pm	LAVERN	Mauldin
LOOKEBA – Lookeba High School. For concurrent enrollment see your high school counselor. For more information call 405-422-1417.										
1742	POLS	1113.17	US Government	1/17/2012	5/11/2012	M W F	11:00am	11:50am	LOKEBA	Staff
LOMEGA – Lomega High School. For concurrent enrollment see your high school counselor. For more information call 405-422-1417.										
1751	ENGL	1113.11	Engl Comp I	1/17/2012	5/11/2012	T R	08:00am	09:15am	LOMEGA	Due
1748	MATH	1513.11	Clg Algebra	1/17/2012	5/11/2012	M W F	12:00pm	12:50pm	LOMEGA	Bates
MULHALL-ORLANDO – Mulhall-Orlando High School. For concurrent enrollment see your high school counselor. For more information call 405-422-1417.										
1735	ENGL	1213.26	Engl Comp II	1/17/2012	5/11/2012	T R	08:00am	09:15am	MULORL	Dobry
1752	HIST	1483.05	US Hist to 1877	1/17/2012	5/11/2012	M W F	09:00am	09:50am	MULORL	Tabor
1736	HIST	1493.18	US Hist sn 1877	1/17/2012	5/11/2012	M W F	10:00am	10:50am	MULORL	Tate
1763	MATH	1513.26	Clg Algebra	1/17/2012	5/11/2012	M W F	12:00pm	12:50pm	MULORL	Staff
MUSTANG – Mustang High School. For concurrent enrollment see your high school counselor. For more information call 405-422-1417.										
9031	HIST	1493.12	US Hist sn 1877	1/17/2012	5/11/2012	T R	02:35pm	03:50pm	MUSTNG	Roberson
9030	HIST	1493.10	US Hist sn 1877	1/17/2012	5/11/2012	M W	08:00am	09:15am	MUSTNG	Roberson
9032	MATH	1513.10	Clg Algebra	1/17/2012	5/11/2012	M W	02:35pm	03:50pm	MUSTNG	Bates
9033	SOC	1113.18	Intro Sociology	1/17/2012	5/11/2012	T R	08:00am	09:15am	MUSTNG	Lopez
9034	SOC	1113.19	Intro Sociology	1/17/2012	5/11/2012	M W	01:00pm	02:15pm	MUSTNG	Lopez
NEWCASTLE – Newcastle High School. For concurrent enrollment see your high school counselor. For more information call 405-422-1417.										
1768	ENGL	1213.29	Engl Comp II	1/17/2012	5/11/2012	T R	09:30am	10:45am	NWCSTL	Dobry
1764	HIST	1493.24	US Hist sn 1877	1/17/2012	5/11/2012	M W F	01:00pm	01:50pm	NWCSTL	Tate
1771	HIST	1493.19	US Hist sn 1877	1/17/2012	5/11/2012	M W F	10:00am	10:50am	NWCSTL	Tate
1738	MATH	1513.01	Clg Algebra	1/17/2012	5/11/2012	T R	11:00am	12:15pm	NWCSTL	Staff
1754	POLS	1113.10	US Government	1/17/2012	5/11/2012	T R	08:00am	09:15am	NWCSTL	Rain
OKARCHE – Okarche High School. For concurrent enrollment see your high school counselor. For more information call 405-422-1417.										
9080	HIST	1493.03	US Hist sn 1877	1/17/2012	5/11/2012	M W F	01:30pm	02:20pm	OKARCH	Tabor
PERRY – Perry High School. For concurrent enrollment see your high school counselor. For more information call 405-422-1417.										
1766	ENGL	1113.07	Engl Comp I	1/17/2012	5/11/2012	T R	08:00am	09:15am	PERRY	Due
1765	ENGL	1213.33	Engl Comp II	1/17/2012	5/11/2012	M W F	12:00pm	12:50pm	PERRY	Rupp
1761	HIST	1493.09	US Hist sn 1877	1/17/2012	5/11/2012	M W F	10:00am	10:50am	PERRY	Tate
PIEDMONT – Piedmont High School. For concurrent enrollment see your high school counselor. For more information call 405-422-1417.										
9072	MATH	1513.08	Clg Algebra	1/17/2012	5/11/2012	M W	01:30pm	02:45pm	PDMT	Staff
9071	POLS	1113.07	US Government	1/17/2012	5/11/2012	T R	01:30pm	02:45pm	PDMT	Rain
RINGWOOD – Ringwood High School. For concurrent enrollment see your high school counselor. For more information call 405-422-1417.										
1719	ENGL	1213.24	Engl Comp II	1/17/2012	5/11/2012	T R	02:00pm	03:15pm	RINGWD	Shottenkirk
1741	HIST	1493.23	US Hist sn 1877	1/17/2012	5/11/2012	M W F	08:00am	08:50am	RINGWD	Tate
SEILING – Seiling High School. For concurrent enrollment see your high school counselor. For more information call 405-422-1417.										
1743	ENGL	1213.27	Engl Comp II	1/17/2012	5/11/2012	T R	02:00pm	03:15pm	SEILNG	Shottenkirk
1769	ENGL	1213.37	Engl Comp II	1/17/2012	5/11/2012	T R	08:00am	09:15am	SEILNG	Dobry
SHATTUCK – Shattuck High School. For concurrent enrollment see your high school counselor. For more information call 405-422-1417.										
1744	ENGL	1113.13	Engl Comp I	1/17/2012	5/11/2012	T R	08:00am	09:15am	SHATCK	Due
1749	ENGL	1213.19	Engl Comp II	1/17/2012	5/11/2012	M W F	08:00am	08:50am	SHATCK	Horton
1747	HIST	1493.16	US Hist sn 1877	1/17/2012	5/11/2012	T R	11:00am	12:15pm	SHATCK	Roberson
SWOSU – Southwestern Oklahoma State University. For more information call 405-422-1417.										
1713	COM	1213.01	Sign Lang I	1/17/2012	3/9/2012	M	06:00pm	10:00pm	SWOSU	Lesperance
1714	COM	2113.02	Sign Lang II	3/12/2012	5/11/2012	M	06:00pm	10:00pm	SWOSU	Lesperance
UNION CITY – Union City High School. For concurrent enrollment see your high school counselor. For more information call 405-422-1417.										
1772	ENGL	1213.35	Engl Comp II	1/17/2012	5/11/2012	M W F	10:00am	10:50am	UNION	Horton
1770	POLS	1113.18	US Government	1/17/2012	5/11/2012	M W F	11:00am	11:50am	UNION	Staff
VERDEN – Verden High School. For concurrent enrollment see your high school counselor. For more information call 405-422-1417.										
1727	ENGL	1213.18	Engl Comp II	1/17/2012	5/11/2012	M W F	08:00am	08:50am	VERDEN	Horton
1755	MATH	1513.15	Clg Algebra	1/17/2012	5/11/2012	M W F	12:00pm	12:50pm	VERDEN	Bates
WATONGA – Watonga High School. For concurrent enrollment see your high school counselor. For more information call 405-422-1417.										
1745	HIST	1493.21	US Hist sn 1877	1/17/2012	5/11/2012	M W F	01:00pm	01:50pm	WATNGA	Tate
1746	HUM	2223.08	Gen Hum II	1/17/2012	5/11/2012	T R	12:30pm	01:45pm	WATNGA	Stone

Seq #	Dept	Num.Sec	Title	Start Date	Stop Date	Days	Start Time	End Time	Location	Instructor
YUKON – Yukon High School. For concurrent enrollment see your high school counselor. For more information call 405-422-1417.										
Day classes and evening chemistry class will be held at Yukon High School, 1777 S. Yukon Parkway.										
Evening classes will be held at Yukon Middle School 6th grade Academy, 1000 Yukon Ave.										
9041	ART	1113.02	Art Apprec I	1/17/2012	3/9/2012	R	06:00pm	10:00pm	YUKON	Arnold
9052	CD	2183.03	Lang/Social Skls	3/12/2012	5/11/2012	T	06:00pm	10:00pm	YUKON	Landolfi
9053	CHEM	1315.03	Gen Chem I w/ Lab	1/17/2012	5/11/2012	T R T	06:00pm 08:00pm	07:50pm 09:50pm	YUKON YUKON	Staff
9045	ENGL	1113.12	Engl Comp I	1/17/2012	3/8/2012	M	06:00pm	10:00pm	YUKON	Lewellen
9055	ENGL	1213.36	Engl Comp II	3/12/2012	5/11/2012	M	06:00pm	10:00pm	YUKON	Lewellen
9043	HIST	1493.01	US Hist sn 1877	1/17/2012	5/11/2012	M	06:00pm	08:50pm	YUKON	Harris
9044	HUM	2173.02	Beliefs/Believers	3/12/2012	5/11/2012	R	06:00pm	10:00pm	YUKON	Arnold
9046	MATH	1513.14	Clg Algebra	1/17/2012	5/11/2012	M W F	01:40pm	02:30pm	YUKON	Staff
9056	MATH	1513.27	Clg Algebra	1/17/2012	5/11/2012	T R	06:00pm	07:15pm	YUKON	Staff
9047	POLS	1113.09	US Government	1/17/2012	5/11/2012	M W F	07:35am	08:25am	YUKON	Caster
9042	POLS	1113.19	US Government	1/17/2012	5/11/2012	M W F	01:40pm	02:30 pm	YUKON	Staff
9050	SOC	1113.17	Intro Sociology	1/17/2012	5/11/2012	M W F	07:35am	08:25am	YUKON	French
9051	SPCH	1113.08	Fund Speech	1/17/2012	5/11/2012	M W F	01:40pm	02:30pm	YUKON	Lardner
9048	SPCH	1113.13	Fund Speech	1/17/2012	3/9/2012	T	06:00pm	10:00pm	YUKON	Bricker

#### LOCATION/ROOM LEGEND

AGH.....	Ag Hall (Darlington)	KINGF.....	Kingfisher High School
ANDRKO.....	Anadarko High School	LAVERN.....	Laverne High School
ARR.....	Arranged Class with Instructor	LOMEGA.....	Lomega High School
AS.....	Arts & Science Building	LRC.....	Learning Resources Center
BB.....	Baseball Building	MATC.....	Mid-America Technology Center
BINGON.....	Binger-Oney High School	MM.....	Multimedia Building
C.....	Center Hall Ray Porter Building	MULORL.....	Mulhall/Orlando High School
CANTON.....	Canton High School	MUSTNG.....	Mustang High School
CASHIN.....	Cashion High School	N.....	North Hall Ray Porter Building
CC.....	Culture Center	NWCSTL.....	Newcastle High School
CHCKTC.....	Canadian Valley Technology Center	OE.....	Bill S. Cole Nursing Building
	Chickasha	OKARCH.....	Okarche High School
CKTC.....	Caddo Kiowa Technology Center	PDMT.....	Piedmont High School
	Ft. Cobb	PE.....	Physical Education Building
CR.....	Equine Center Classroom (Royse Ranch)	POOL.....	Swimming Pool Natatorium
CTTC.....	Chisholm Trail Technology Center	RPB.....	Royse Ranch
CVTC.....	Canadian Valley Technology Center	RCC.....	Redlands Conference Center
	El Reno	S.....	South Hall Ray Porter Building
DEL.....	DeLaval Building (Darlington)	SC.....	Student Center
DOVER.....	Dover High School	SEILNG.....	Seiling High School
DRMND.....	Drummond High School	SHATCK.....	Shattuck High School
FTCOBB.....	Caddo Kiowa Technology Center	SS.....	Student Services Center
FTRENO.....	Fort Reno	SWOSU.....	Southwestern OK State Univ. Weatherford
FTSPLY.....	Fort Supply High School	TUTTLE.....	Tuttle High School
GAGE.....	Gage High School	UNION.....	Union City High School
GEARY.....	Geary High School	VERDEN.....	Verden High School
H.....	H Building (Darlington)	WATNGA.....	Watonga High School
HE.....	Fitness for Life Wellness Center	YUKON.....	Yukon School System

For list and price of required textbooks go to: [www.redlandsc.edu/tuition-and-fees](http://www.redlandsc.edu/tuition-and-fees)

# THE TECHNOLOGY CENTER CONNECTION

*Enrollment in these courses must be approved by Arlie Schroder, Cooperative Programs Coordinator 405-422-1287*

## CADDO KIOWA TECHNOLOGY CENTER - FT. COBB

Seq #	Dept	Num.Sec	Title	Location	Instructor	Seq #	Dept	Num.Sec	Title	Location	Instructor
9101	ACCT	2101.02	Payroll Acct	CKTC	White	9110	CD	2053.02	Child Grwth & Dev	CKTC	Rexroat
9102	ACCT	2213.01	Cmptr Acct	CKTC	White	9111	CD	2063.03	Bhv Guid Yng Chld	CKTC	Rexroat
9103	AHS	1123.03	Medical Term	CKTC	Oswald	9112	CD	2073.01	Music/Mvmt/Crt Arts	CKTC	Rexroat
9104	AMT	1043.02	Document Formatting	CKTC	Hutcherson	9113	CD	2101.02	Portfolio Dvpmnt CD	CKTC	Rexroat
9139	AMT	1313.02	Med Proc Coding	CKTC	Oswald	9114	CD	2103.01	Child w/ Spec Needs	CKTC	Rexroat
9138	AMT	1323.01	Med Diag Coding II	CKTC	Oswald	9115	CD	2173.01	Cognit Skls Chldrn	CKTC	Rexroat
9105	AMT	2153.02	Word Procs I	CKTC	Oswald	9116	CD	2183.01	Lang/Social Skls	CKTC	Rexroat
9106	AMT	2233.03	Medical Trans	CKTC	Oswald	9117	CD	2203.01	Pgm Plan & Eval	CKTC	Rexroat
9126	AMT	2253.02	Law Office Tech	CKTC	Hutcherson	9118	CMSC	1223.04	Bus Appl Sftwr	CKTC	White
9107	AMT	2303.02	Dsktop Publ	CKTC	Pierce	9122	CMSC	1223.17	Bus Appl Sftwr	CKTC	Pierce
9128	AMT	2353.02	Medical Billing	CKTC	Oswald	9123	CMSC	1223.18	Bus Appl Sftwr	CKTC	Oswald
9127	AMT	2423.01	Legal Proc/Pro	CKTC	Hutcherson	9124	CMSC	1223.19	Bus Appl Sftwr	CKTC	Hutcherson
9125	AMT	2433.02	Legal Terminology	CKTC	Hutcherson	9119	CMSC	1233.01	Sprdsht Appl	CKTC	White
9108	CD	2023.01	Nutr/Hlth/Sfty Chld	CKTC	Rexroat	9120	CMSC	1243.03	Database Appl	CKTC	White
9109	CD	2043.01	Parent/Comm Relat	CKTC	Rexroat	9121	CMSC	1373.01	Opting Systems	CKTC	White

## CANADIAN VALLEY TECHNOLOGY CENTER - EL RENO

Seq #	Dept	Num.Sec	Title	Location	Instructor	Seq #	Dept	Num.Sec	Title	Location	Instructor
9835	ACCT	2213.02	Cmptr Acct	CVTC	Ridgeway	9812	CMSC	1243.08	Database Appl	CVTC	Ridgeway
9801	ACCT	2213.03	Cmptr Acct	CVTC	Johnson	9824	CMSC	1373.03	Opting Systems	CVTC	Ridgeway
9802	AHS	1123.05	Medical Term	CVTC	Johnson	9825	ITEC	1016.02	PC Hrdwr & Sftwr	CVTC	DeWald
9816	AHS	1123.1	Medical Term	CVTC	Wiggins	9826	ITEC	1113.02	Fund of UNIX/LINUX	CVTC	DeWald
9803	AMT	1043.01	Document Formatting	CVTC	Ridgeway	9854	ITEC	1213.01	Color & Dsgn Theory	CVTC	Brower
9804	AMT	1313.01	Med Proc Coding	CVTC	Johnson	9840	ITEC	1216.01	Fund Digi Media Tech	CVTC	Brower
9805	AMT	1323.15	Med Diag Coding II	CVTC	Johnson	9847	ITEC	1313.01	Web Programming	CVTC	Brower
9806	AMT	2153.03	Word Procs I	CVTC	Johnson	9827	ITEC	1353.01	Network OS	CVTC	DeWald
9811	AMT	2153.08	Word Procs I	CVTC	Ridgeway	9836	ITEC	1413.01	Prin Info Assurance	CVTC	DeWald
9807	AMT	2233.02	Medical Trans	CVTC	Johnson	9855	ITEC	1543.01	Fund Video Prod	CVTC	Brower
9808	AMT	2303.03	Dsktop Publ	CVTC	Ridgeway	9828	ITEC	2113.02	Windows Wkstation OS	CVTC	DeWald
9809	AMT	2333.01	Adv Medical Coding	CVTC	Johnson	9829	ITEC	2123.02	Windows Server OS	CVTC	DeWald
9810	AMT	2353.01	Medical Billing	CVTC	Johnson	9842	ITEC	2223.01	Web Design I	CVTC	Brower
9814	BUS	2093.04	Bus Comm	CVTC	Ridgeway	9849	ITEC	2233.01	Web Design II	CVTC	Brower
9837	CD	2023.04	Nutr/Hlth/Sfty Chld	CVTC	White	9856	ITEC	2243.01	Digi Animation Dsgn	CVTC	Brower
9839	CD	2043.04	Parent/Comm Relat	CVTC	White	9843	ITEC	2263.01	Digi Web Prsntation	CVTC	Brower
9818	CD	2053.04	Child Grwth & Dev	CVTC	White	9850	ITEC	2283.01	Web Mrkt & Digi Ads	CVTC	Brower
9819	CD	2063.02	Bhv Guid Yng Chld	CVTC	White	9858	ITEC	2363.01	Win Ntwk Infrastruct	CVTC	DeWald
9838	CD	2073.04	Music/Mvmt/Crt Arts	CVTC	White	9860	ITEC	2413.01	Ntwk Security	CVTC	DeWald
9834	CD	2203.03	Pgm Plan & Eval	CVTC	White	9862	ITEC	2423.01	Security +	CVTC	DeWald
9820	CD	2223.02	Prof in CD	CVTC	White	9851	ITEC	2543.01	Digi Video Editing	CVTC	Brower
9821	CMSC	1223.05	Bus Appl Sftwr	CVTC	Johnson	9864	ITEC	2553.02	Digi Media Prod	CVTC	Brower
9815	CMSC	1223.15	Bus Appl Sftwr	CVTC	Ridgeway	9846	ITEC	2563.01	Digi Video Animation	CVTC	Brower
9813	CMSC	1233.02	Sprdsht Appl	CVTC	Ridgeway	9852	ITEC	2573.01	Digi Video Present	CVTC	Brower
9822	CMSC	1233.05	Sprdsht Appl	CVTC	Johnson	9865	ITEC	2583.02	Digi Video Mrkt Ads	CVTC	Brower
9823	CMSC	1243.05	Database Appl	CVTC	Johnson						

## CANADIAN VALLEY TECHNOLOGY CENTER - CHICKASHA

Seq #	Dept	Num.Sec	Title	Location	Instructor	Seq #	Dept	Num.Sec	Title	Location	Instructor
9601	ACCT	2213.04	Cmptr Acct	CVTCCK	Link	9611	CD	2053.05	Child Grwth & Dev	CVTCCK	Carver
9602	AHS	1123.04	Medical Term	CVTCCK	Fallowwill	9612	CD	2063.01	Bhv Guid Yng Chld	CVTCCK	Carver
9648	AHS	1123.11	Medical Term	CVTCCK	Gore	9632	CD	2073.03	Music/Mvmt/Crt Arts	CVTCCK	Carver
9603	AMT	1043.03	Document Formatting	CVTCCK	Link	9647	CD	2103.02	Child w/ Spec Needs	CVTCCK	Carver
9604	AMT	2153.01	Word Procs I	CVTCCK	Link	9613	CD	2203.04	Pgm Plan & Eval	CVTCCK	Carver
9605	AMT	2233.01	Medical Trans	CVTCCK	Link	9614	CD	2223.03	Prof in CD	CVTCCK	Carver
9607	BUS	2093.03	Bus Comm	CVTCCK	Link	9615	CMSC	1223.06	Bus Appl Sftwr	CVTCCK	Link
9608	CAD	1024.01	Intro to CAD	CVTCCK	Patterson	9616	CMSC	1233.03	Sprdsht Appl	CVTCCK	Link
9609	CAD	1114.01	Bsc Drafting	CVTCCK	Patterson	9617	CMSC	1243.04	Database Appl	CVTCCK	Link
9606	CAD	2013.01	CAD Prsntation Graph	CVTCCK	Patterson	9618	CMSC	1373.02	Opting Systems	CVTCCK	Link
9610	CAD	2034.01	Advanced CAD	CVTCCK	Patterson	9620	ITEC	1016.01	PC Hrdwr & Sftwr	CVTCCK	Meloy
9619	CAD	2124.02	Residential Arch Drf	CVTCCK	Patterson	9621	ITEC	1113.01	Fund of UNIX/LINUX	CVTCCK	Meloy
9625	CAD	2133.02	Commercial Arch Drf	CVTCCK	Patterson	9633	ITEC	1213.02	Color & Dsgn Theory	CVTCCK	McMurry
9627	CAD	2294.02	Adv Spec Dsgn Proj	CVTCCK	Patterson	9638	ITEC	1216.02	Fund Digi Media Tech	CVTCCK	McMurry
9626	CAD	2394.02	Special Dsgn Proj	CVTCCK	Patterson	9646	ITEC	1223.01	MS Cert Dsktp Tech	CVTCCK	Meloy
9630	CD	2023.05	Nutr/Hlth/Sfty Chld	CVTCCK	Carver	9641	ITEC	1313.02	Web Programming	CVTCCK	McMurry
9631	CD	2043.03	Parent/Comm Relat	CVTCCK	Carver	9622	ITEC	1353.02	Network OS	CVTCCK	Meloy
						9634	ITEC	1543.02	Fund Video Prod	CVTCCK	McMurry

continued next page

Seq #	Dept	Num.Sec	Title	Location	Instructor
9623	ITEC	2113.01	Windows Wkstation OS	CVTCCK	Meloy
9624	ITEC	2123.01	Windows Server OS	CVTCCK	Meloy
9639	ITEC	2223.02	Web Design I	CVTCCK	McMurry
9642	ITEC	2233.02	Web Design II	CVTCCK	McMurry
9635	ITEC	2243.02	Digi Animation Dsgn	CVTCCK	McMurry
9640	ITEC	2263.02	Digi Web Prsntation	CVTCCK	McMurry
9643	ITEC	2283.02	Web Mrkt & Digi Ads	CVTCCK	McMurry

Seq #	Dept	Num.Sec	Title	Location	Instructor
9628	ITEC	2363.02	Win Ntwk Infrastruct	CVTCCK	Meloy
9629	ITEC	2423.02	Security +	CVTCCK	Meloy
9644	ITEC	2543.02	Digi Video Editing	CVTCCK	McMurry
9636	ITEC	2553.01	Digi Media Prod	CVTCCK	McMurry
9649	ITEC	2563.02	Digi Video Animation	CVTCCK	McMurry
9645	ITEC	2573.02	Digi Video Present	CVTCCK	McMurry
9637	ITEC	2583.01	Digi Video Mrkt Ads	CVTCCK	McMurry

#### CANADIAN VALLEY TECHNOLOGY CENTER - YUKON

Seq #	Dept	Num.Sec	Title	Location	Instructor
9708	AHS	1123.06	Medical Term	CVTCYU	Walker
9720	AHS	1123.07	Medical Term	CVTCYU	Siegrist
9733	AHS	1123.08	Medical Term	CVTCYU	Ross
9734	AHS	1123.09	Medical Term	CVTCYU	Denton
9728	AMT	1043.05	Document Formatting	CVTCYU	Boatman
9718	AMT	1313.04	Med Proc Coding	CVTCYU	Walker
9719	AMT	1323.02	Med Diag Coding II	CVTCYU	Walker
9721	AMT	2153.06	Word Proc I	CVTCYU	Boatman
9729	AMT	2153.07	Word Procs I	CVTCYU	Boatman
9736	AMT	2153.09	Word Procs I	CVTCYU	Green
9730	AMT	2233.04	Medical Tran	CVTCYU	Walker
9731	AMT	2333.02	Adv Medical Coding	CVTCYU	Walker
9732	AMT	2353.03	Medical Billing	CVTCYU	Walker
9704	CAD	1024.02	Intro to CAD	CVTCYU	Hedrick
9705	CAD	1114.02	Bsc Drafting	CVTCYU	Hedrick
9717	CAD	2013.02	CAD Prsntation Graph	CVTCYU	Hedrick
9706	CAD	2034.02	Advanced CAD	CVTCYU	Hedrick
9707	CAD	2124.01	Residential Arch Drf	CVTCYU	Hedrick
9703	CAD	2133.01	Commercial Arch Drf	CVTCYU	Hedrick

Seq #	Dept	Num.Sec	Title	Location	Instructor
9701	CAD	2294.01	Adv Spec Dsgn Proj	CVTCYU	Hedrick
9702	CAD	2394.01	Special Dsgn Proj	CVTCYU	Hedrick
9722	CMSC	1223.14	Bus Appl Sftwr	CVTCYU	Walker
9735	CMSC	1223.16	Bus Appl Sftwr	CVTCYU	Green
9723	CMSC	1233.06	Sprdsht Appl	CVTCYU	Walker
9727	CMSC	1233.07	Sprdsht Appl	CVTCYU	Boatman
9737	CMSC	1233.08	Sprdsht Appl	CVTCYU	Green
9724	CMSC	1243.06	Database App	CVTCYU	Walker
9726	CMSC	1243.07	Database App	CVTCYU	Boatman
9738	CMSC	1243.09	Database Appl	CVTCYU	Green
9709	ITEC	1016.04	PC Hrdwr & Sftwr	CVTCYU	Damani
9714	ITEC	1353.04	Network OS	CVTCYU	Damani
9710	ITEC	1513.02	Programming Fundmntls	CVTCYU	Damani
9712	ITEC	1613.02	Cmptr Programming I	CVTCYU	Damani
9725	ITEC	2013.01	Unified Mdi Language	CVTCYU	Damani
9711	ITEC	2513.02	Visual Programming	CVTCYU	Damani
9715	ITEC	2613.02	Cmptr Programming II	CVTCYU	Damani
9713	ITEC	2633.02	JAVA Programming	CVTCYU	Damani
9716	ITEC	2653.02	Dbase Programming	CVTCYU	Damani

#### EASTERN OKLAHOMA TECHNOLOGY CENTER

Seq #	Dept	Num.Sec	Title	Location	Instructor
9501	EMT	1118.04	EMT Basic	EOTC	Sanders
9502	FF	1113.01	FF Orientation	EOTC	Sanders
9503	FF	1117.01	Firefighter I	EOTC	Sanders
9504	FF	1122.01	FF Incident Mgmt	EOTC	Sanders

Seq #	Dept	Num.Sec	Title	Location	Instructor
9505	FF	2013.01	FF Strat/Tactic/Sfty	EOTC	Sanders
9506	FF	2118.01	Firefighter II	EOTC	Sanders
9507	FF	2211.01	Adv Vehicle Extractn	EOTC	Sanders

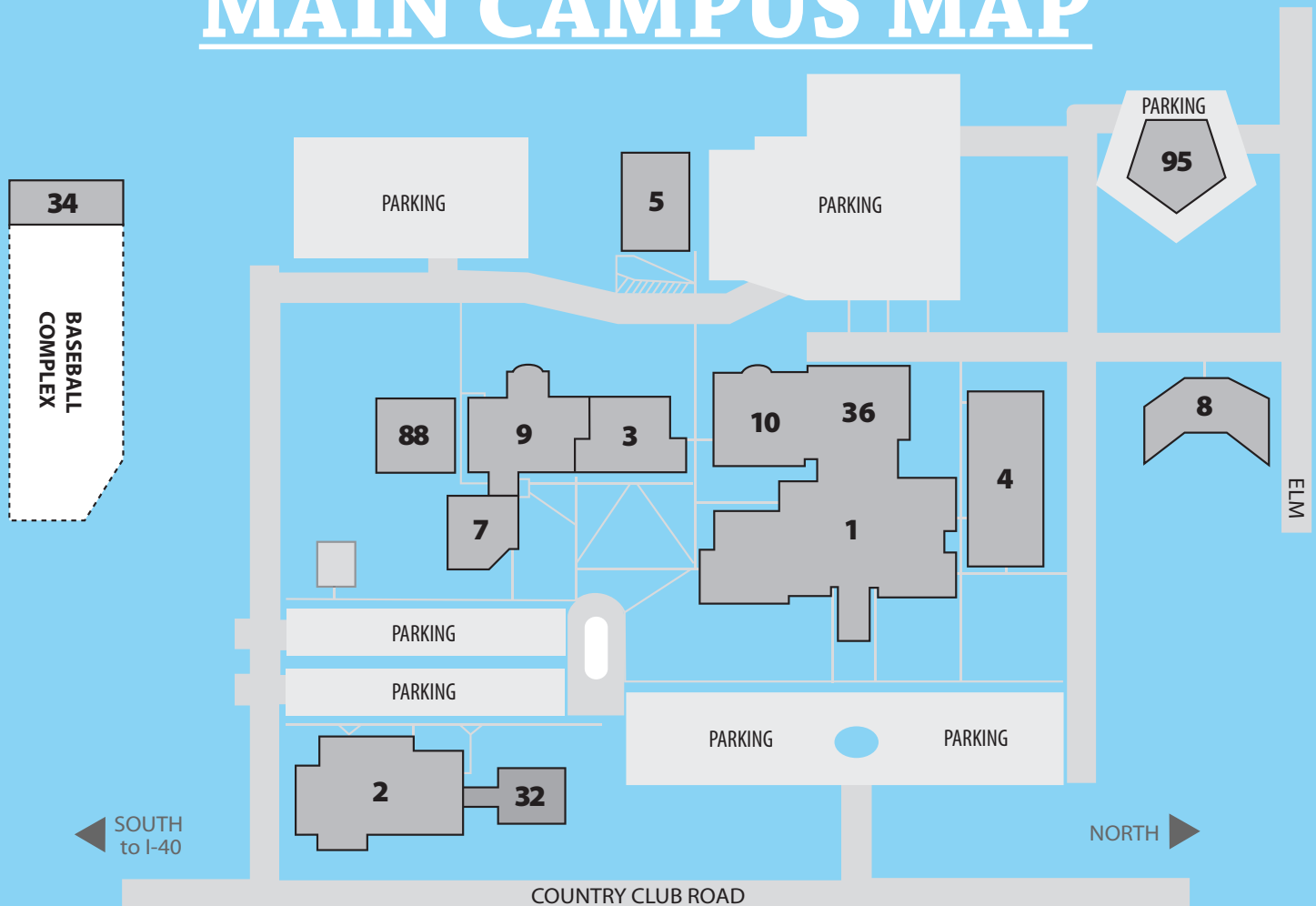
#### MID-AMERICA TECHNOLOGY CENTER - WAYNE

Seq #	Dept	Num.Sec	Title	Location	Instructor
9930	EQSC	1113.01	Intro Equine Sci	MATC	Deskin-Colvin
9927	EQSC	2223.01	Equine Hlth/Nutr	MATC	Schuerman

Seq #	Dept	Num.Sec	Title	Location	Instructor
9928	EQSC	2243.02	Equine Breed/Mgmt	MATC	Schuerman
9929	EQSC	2423.02	Equine Anat & Phys	MATC	Schuerman

For list and price of required textbooks go to: [www.redlandsc.edu/tuition-and-fees](http://www.redlandsc.edu/tuition-and-fees)

# MAIN CAMPUS MAP



- |                                  |   |
|----------------------------------|---|
| 1. Ray Porter Academic Complex   | 9. Multimedia Lifelong Learning Center  |
| 2. Gymnasium / Natatorium(Pool)  | 10. Conference Center                   |
| 3. Learning Resources Center     | 32. HealthSouth Fitness/Wellness Center |
| 4. Bill S. Cole Nursing Building | 34. Baseball Indoor Hitting Facility    |
| 5. Physical Plant Building       | 36. Bass Student Center                 |
| 7. Culture Education Center      | 88. Arts & Science Building             |
| 8. Gemini Center                 | 95. Cougar Crossing                     |

## Darlington Agriculture Education and Research Center

Go north on Country Club Road to Sunset and then east on Sunset to Highway 81. Go north on Highway 81 approx. 3.2 miles to Darlington Road. Turn left on Darlington Road and go approx. 3 miles until the paved road ends. Turn left and go approx. one-half mile to enter the Darlington complex. The "H" Building classroom is located on the east side of the complex of buildings.

## Equine Center

Go north on Country Club Road to Sunset and then east on Sunset to Highway 81. Go north on Highway 81 approx. 1 1/2 miles to Jones Road. Go east on Jones Road 1/4 mile.

## Royse Ranch Campus

Go north on Country Club Road to Sunset and then east on Sunset to Highway 81. Go north on Highway 81 approx. 5.6 miles to the Ranch entrance on the east side of the road.

All information supplied in this publication is accurate at the time of printing however changes may occur and will supersede information in this publication. A total of 3,500 schedules printed at a cost of \$1,636.00 Redlands Community College does not discriminate on the basis of race, color, national origin, sex, disability, age, religion, or status as a veteran, in any of its educational programs, activities, policies, practices, or procedures, including, but is not limited to, admissions, employment, eligibility for financial aid, and educational services, in accordance with Titles VI and VII of the Civil Rights Act of 1964, Executive Order 11246 as amended, Title IX of the Education Amendments of 1972, Section 504 of the Rehabilitation Act of 1973, the Americans with Disabilities Act of 1990, the Age Discrimination Act of 1975, the Civil Rights Act of 1991, and other federal laws and regulations. The following person has been designated to handle inquiries regarding the College's nondiscrimination policies and procedures for students, employees, and others: Human Resources Coordinator; Redlands Community College; 1300 S. Country Club Road; El Reno, OK 73036-5304; (405) 422-1267.